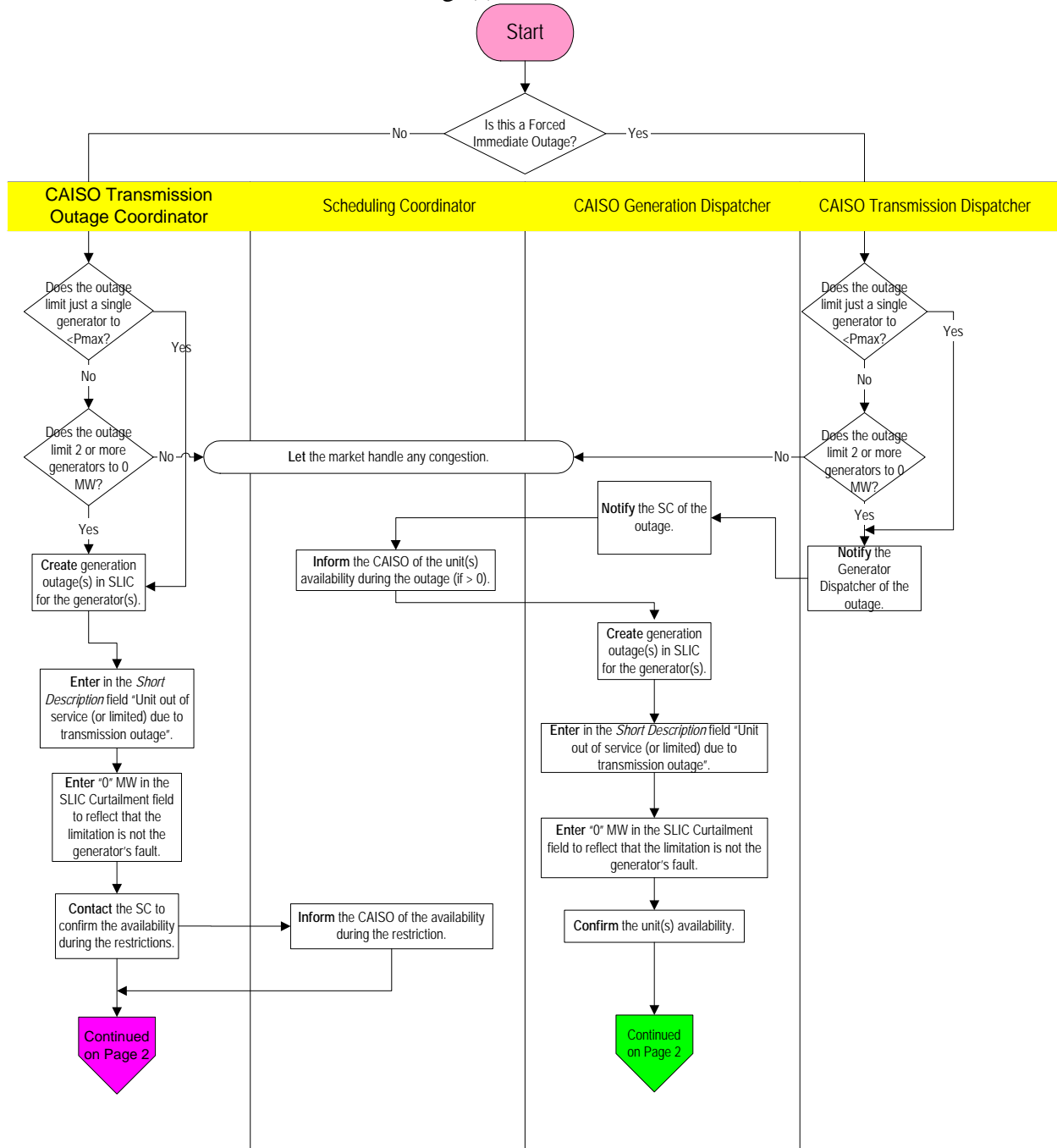

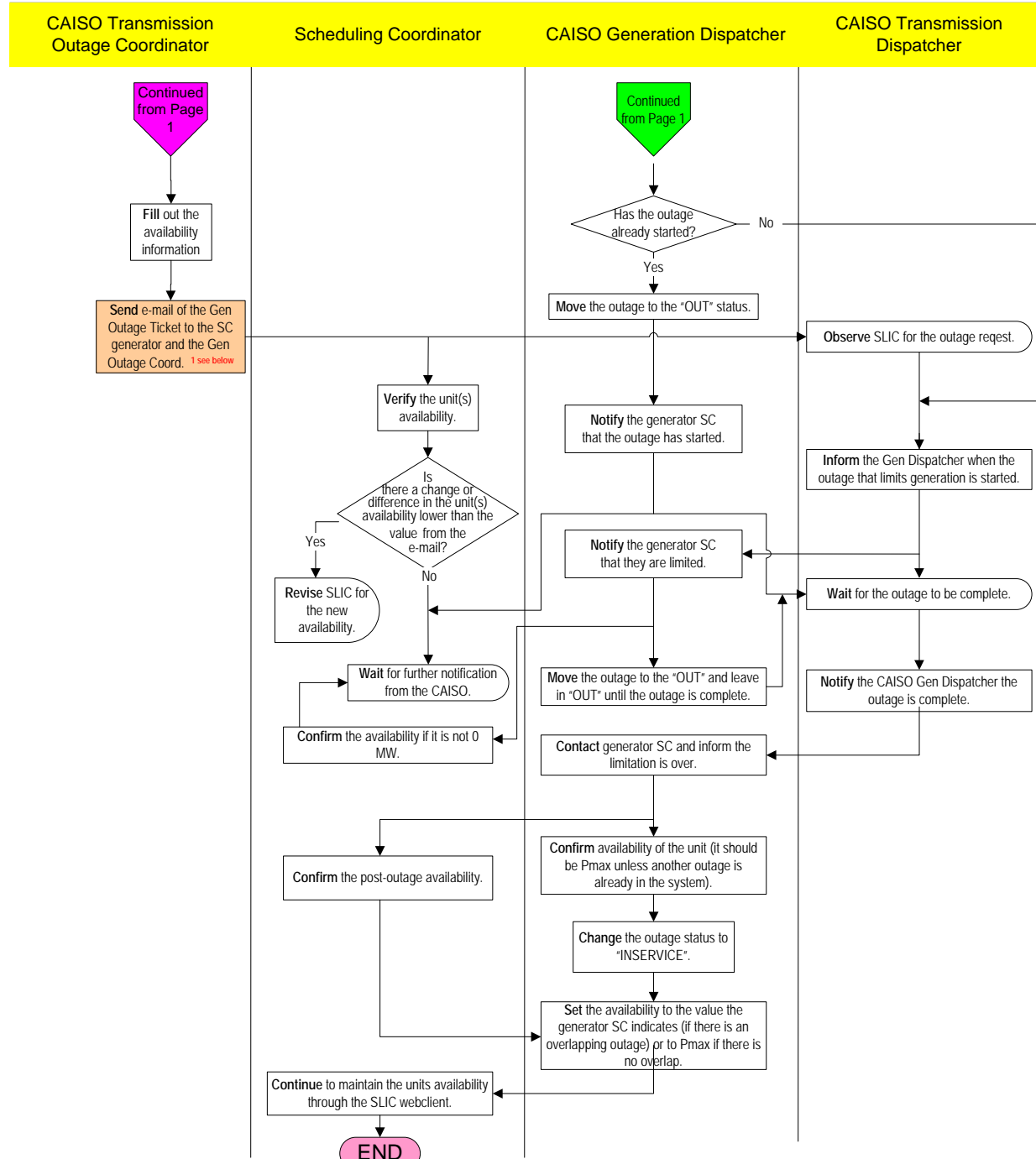
	Operating Procedure Attachment O	Procedure No.	T-1130
		Version No.	2.0
		Effective Date	4/29/08
Transmission Induced Generation Outages		Distribution Restriction: None	

The flowchart below shows the tasks and communications that are necessary by the indicated parties to prepare for or react to Planned or Immediate forced generation outages that are caused by a transmission line outage. This process applies to either 1) outages that hard limit just a single generator to $< P_{max}$ or 2) outages that limit 2 or more generators to 0 MW, otherwise let the market mechanisms address the outage(s):



 California ISO Your Link to Power	Operating Procedure Attachment O	Procedure No.	T-1130
		Version No.	2.0
		Effective Date	4/29/08
Transmission Induced Generation Outages		Distribution Restriction: None	



¹ Place the following verbiage on the top of the e-mail: "Your unit/resource's availability has been limited due to a transmission outage. Please note the date and time of this outage. If your unit/resource's availability is less than the limitation in the outage card below, then reduce the availability as appropriate and submit an outage card for the additional limitation. However, for the duration of this outage, do not adjust the unit/resource's availability above the limitation caused by this outage. You are responsible for verifying/revising unit availability for the date and time stated in this request. Refer to ISO Operating Procedure T-113 Attachment O for further information. Please monitor your SLIC Web workspace for outage status changes. If you have any questions regarding this limitation, please contact the ISO Outage Management group."