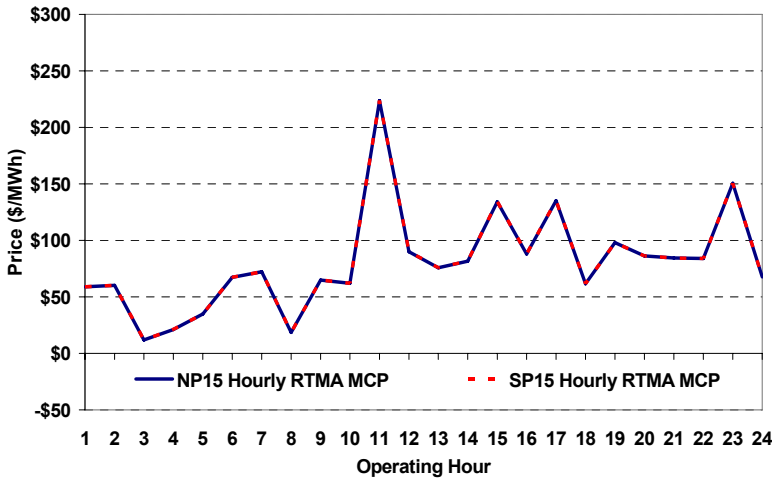
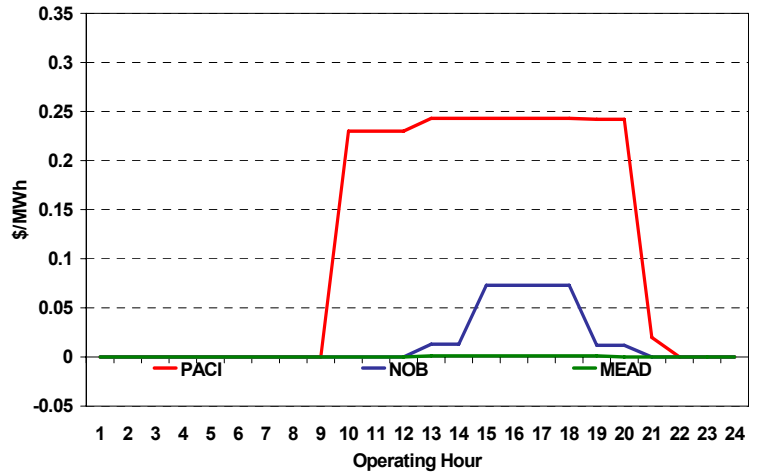


The content of this page is subject to change without notice. Decisions based on information contained herein are the visitor's responsibility.

### Real-Time Hourly Average MCP



### Selected Day Ahead Branch Group Congestion Prices

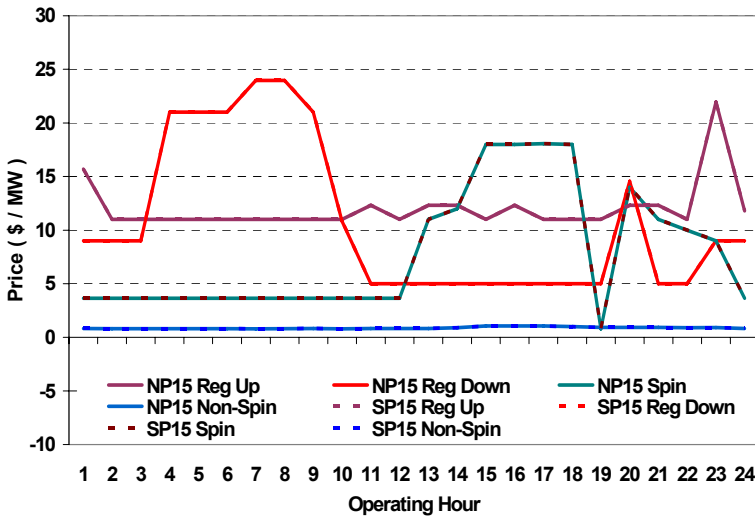


	NP15				SP15			
	Min	Max	Avg	Δ Avg.	Min	Max	Avg	Δ Avg.
<b>Peak</b>	\$ (17.67)	\$ 399.00	\$ 117.01	\$ 42.78	\$ (17.67)	\$ 399.00	\$ 117.01	\$ 42.78
<b>Off-Peak</b>	\$ (12.00)	\$ 398.00	\$ 54.02	\$ (5.19)	\$ (12.00)	\$ 398.00	\$ 54.02	\$ (5.19)

### Day-Ahead Inter-Zonal Congestion Market: 30-Jul, 2008

Branch Group	Congestion Cost		Total	Total Cost Percent
	Import	Export		
PACI	\$ 4,296	\$ -	\$ 4,296	89%
NOB	\$ 544	\$ -	\$ 544	11%
MEAD	\$ 5	\$ -	\$ 5	0%

### Day Ahead A/S Market Clearing Prices



### Intrazonal Congestion: Out-of-Sequence Redispatch Costs

	Inc MWh	Inc Redispatch Costs	Dec MWh	Dec Redispatch Costs
<b>Peak</b>	82	24,823	-29	3,047
<b>Off-Peak</b>	20	6,452	-462	4,334
<b>Total</b>	102	\$ 31,274	-491	\$ 7,381

### Reliability: Must-Offer Unit Commitments

Commitment Type	Avg Hrlly P-Min MW	Daily Min-Load Cost
FERCMO0	0	\$0
RA	111	\$122,808
<b>Totals</b>	111	\$122,808

### Loads:

Peak Load	38,880 MW	Average Load	31505 MW
Time of peak	16:20	Δ Peak from Prev. Day	1,756 MW

Day Ahead (DA) Market Summary: Ancillary Services (A/S) Capacity	Peak				Off-Peak			
	Min	Max	Avg.	Δ Avg.	Min	Max	Avg.	Δ Avg.
Regulation Up Price (\$/MW)	11.00	12.32	11.50	-2.64	11.00	21.96	13.06	0.58
Regulation Down Price (\$/MW)	5.00	23.97	9.33	-3.50	9.00	21.00	13.50	-2.57
Spinning Reserve Price (\$/MW)	0.80	18.07	9.55	-2.77	3.65	9.00	4.32	0.30
Non-Spinning Reserve Price (\$/MW)	0.80	1.05	0.90	0.01	0.81	0.91	0.83	-0.01
Regulation Up Bid Sufficiency Ratio*	157%	368%	243%	-20%	136%	313%	259%	-38%
Regulation Down Bid Sufficiency Ratio*	160%	423%	329%	24%	168%	291%	221%	25%
Spinning Reserve Bid Sufficiency Ratio*	98%	182%	125%	-12%	96%	175%	154%	-2%
Non-Spinning Reserve Bid Sufficiency Ratio*	121%	244%	165%	-10%	154%	232%	209%	-5%
<b>Total Cost of DA A/S (\$)</b>	<b>393,925</b>				<b>-83,870</b>			

\* The Bid Sufficiency Ratio for a given market in a given hour is defined as the sum of capacity offers in MWs divided by the capacity requirement in MWs.