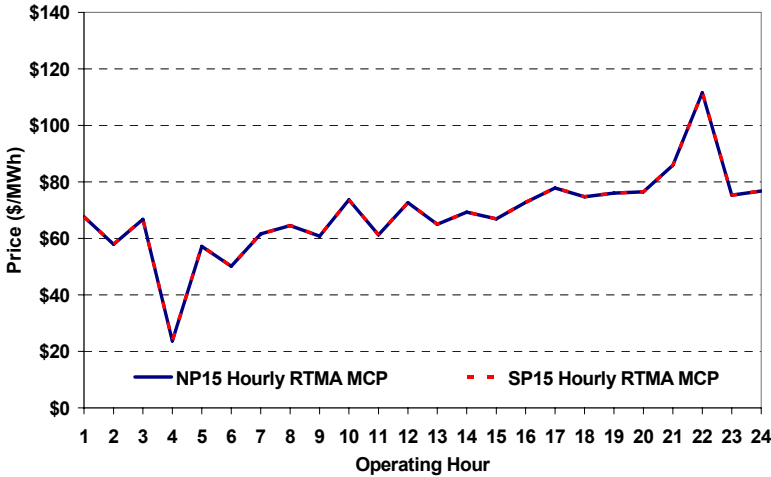
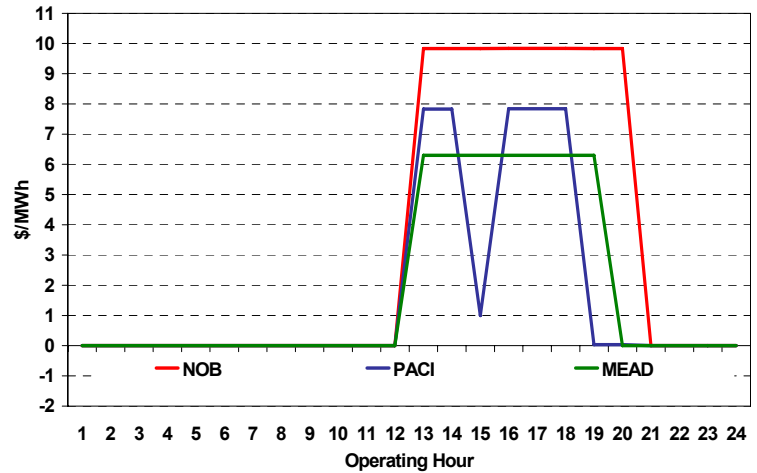


The content of this page is subject to change without notice. Decisions based on information contained herein are the visitor's responsibility.

### Real-Time Hourly Average MCP



### Selected Day Ahead Branch Group Congestion Prices

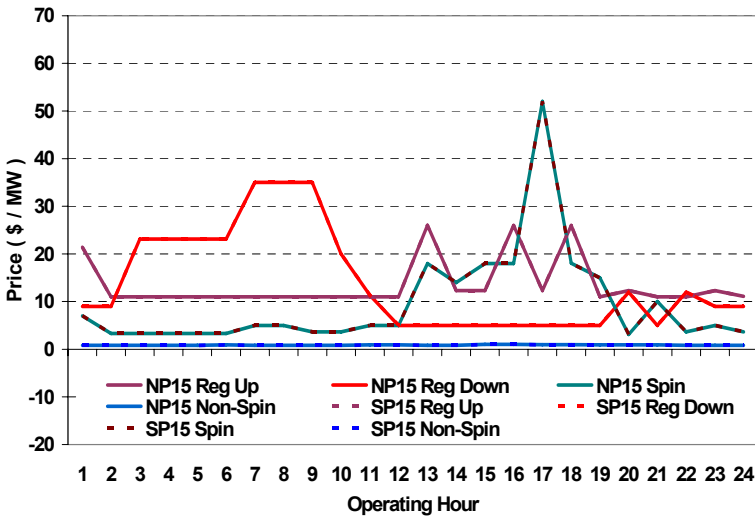


	NP15				SP15			
	Min	Max	Avg	Δ Avg.	Min	Max	Avg	Δ Avg.
<b>Peak</b>	\$ (0.01)	\$ 398.00	\$ 74.23	\$ 5.27	\$ (0.01)	\$ 398.00	\$ 74.23	\$ 5.27
<b>Off-Peak</b>	\$ -	\$ 145.00	\$ 59.21	\$ 2.91	\$ -	\$ 145.00	\$ 59.21	\$ 2.91

### Day-Ahead Inter-Zonal Congestion Market: 29-Jul, 2008

Branch Group	Congestion Cost		Total	Total Cost Percent
	Import	Export		
NOB	\$ 125,166	\$ -	\$ 125,166	57%
PACI	\$ 65,195	\$ -	\$ 65,195	30%
MEAD	\$ 29,681	\$ -	\$ 29,681	13%

### Day Ahead A/S Market Clearing Prices



### Intrazonal Congestion: Out-of-Sequence Redispatch Costs

	Inc MWh	Inc Redispatch Costs	Dec MWh	Dec Redispatch Costs
<b>Peak</b>	263	40,925	-282	8,047
<b>Off-Peak</b>	148	23,951	-51	82
<b>Total</b>	411	\$ 64,876	-333	\$ 8,129

### Reliability: Must-Offer Unit Commitments

Commitment Type	Avg Hrlly P-Min MW	Daily Min-Load Cost
FERCMO0	0	\$0
RA	127	\$176,106
<b>Totals</b>	127	\$176,106

### Loads:

Peak Load	37,124 MW	Average Load	30870 MW
Time of peak	16:31	Δ Peak from Prev. Day	79 MW

Day Ahead (DA) Market Summary: Ancillary Services (A/S) Capacity	Peak				Off-Peak			
	Min	Max	Avg.	Δ Avg.	Min	Max	Avg.	Δ Avg.
Regulation Up Price (\$/MW)	11.00	26.01	14.14	-6.94	11.00	21.40	12.48	-0.22
Regulation Down Price (\$/MW)	5.00	35.00	12.83	1.44	9.00	23.14	16.07	-1.84
Spinning Reserve Price (\$/MW)	3.10	52.01	12.32	-1.19	3.30	7.00	4.02	0.89
Non-Spinning Reserve Price (\$/MW)	0.81	1.00	0.89	0.01	0.82	0.90	0.83	0.03
Regulation Up Bid Sufficiency Ratio*	167%	372%	263%	5%	194%	341%	297%	0%
Regulation Down Bid Sufficiency Ratio*	132%	412%	305%	-27%	139%	309%	195%	7%
Spinning Reserve Bid Sufficiency Ratio*	101%	179%	138%	1%	114%	174%	156%	-5%
Non-Spinning Reserve Bid Sufficiency Ratio*	126%	245%	175%	-3%	164%	235%	214%	-17%
<b>Total Cost of DA A/S (\$)</b>			<b>477,795</b>	<b>-54,594</b>				

\* The Bid Sufficiency Ratio for a given market in a given hour is defined as the sum of capacity offers in MWs divided by the capacity requirement in MWs.