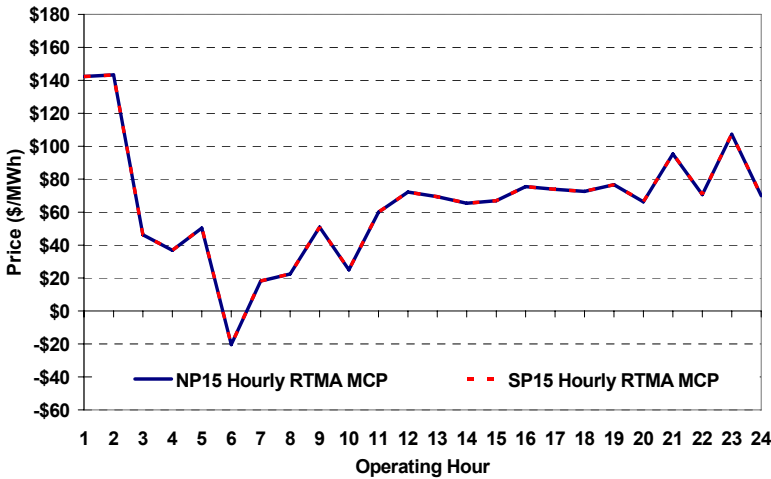
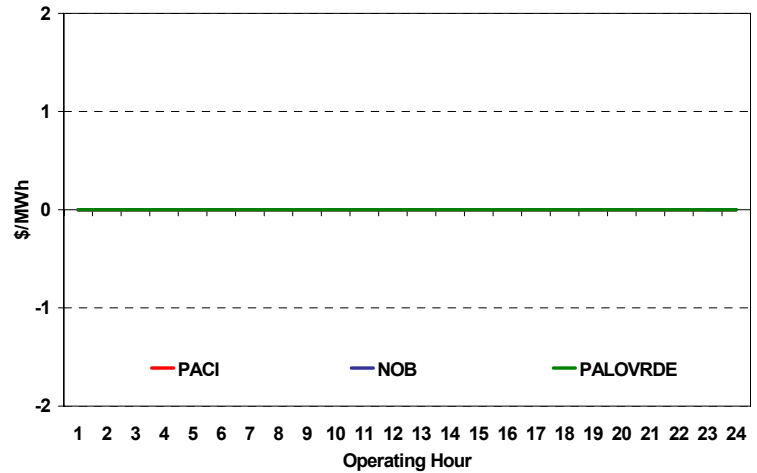


The content of this page is subject to change without notice. Decisions based on information contained herein are the visitor's responsibility.

Real-Time Hourly Average MCP



Selected Day Ahead Branch Group Congestion Prices

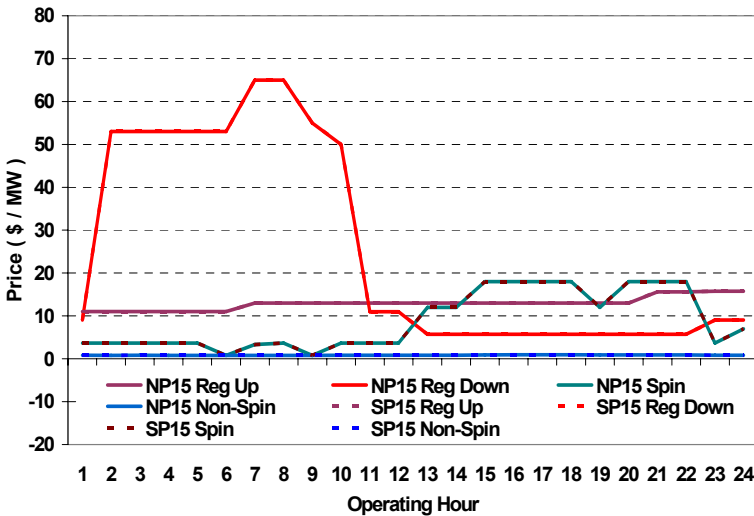


	NP15				SP15			
	Min	Max	Avg	Δ Avg.	Min	Max	Avg	Δ Avg.
RTMA MCP								
Hours 7-22	\$ (8.00)	\$ 125.33	\$ 63.00	\$(22.94)	\$ (8.00)	\$ 125.33	\$ 63.00	\$(22.94)
Hours 1-6, 23-24	\$ (30.00)	\$ 391.19	\$ 60.34	\$(11.71)	\$ (30.00)	\$ 391.19	\$ 60.34	\$(11.71)

Day-Ahead Inter-Zonal Congestion Market: 27-Jul, 2008

Branch Group	Congestion Cost		Total	Total Cost Percent
	Import	Export		
PALOVRDE	\$ -	\$ -	\$ -	0%
NOB	\$ -	\$ -	\$ -	0%
PACI	\$ -	\$ -	\$ -	0%

Day Ahead A/S Market Clearing Prices



Intrazonal Congestion: Out-of-Sequence Redispatch Costs

	Inc MWh	Inc Redispatch Costs	Dec MWh	Dec Redispatch Costs
Peak	279	35,965	-103	1,720
Off-Peak	351	34,099	-334	2,695
Total	630	\$ 70,064	-436	\$ 4,415

Reliability: Must-Offer Unit Commitments

Commitment Type	Avg Hrlly P-Min MW	Daily Min-Load Cost
FERCMOO	0	\$0
RA	97	\$168,366
Totals	97	\$168,366

Loads:

Peak Load	34,397 MW	Average Load	28590 MW
Time of peak	16:49	Δ Peak from Prev. Day	-3,171 MW

Day Ahead (DA) Market Summary: Ancillary Services (A/S) Capacity	Peak				Off-Peak			
	Min	Max	Avg.	Δ Avg.	Min	Max	Avg.	Δ Avg.
Regulation Up Price (\$/MW)	13.00	15.63	13.33	-6.83	11.00	15.77	12.19	2.19
Regulation Down Price (\$/MW)	5.71	65.00	19.63	-1.34	9.00	53.01	36.51	21.66
Spinning Reserve Price (\$/MW)	0.80	18.00	11.29	1.39	0.80	7.00	3.71	1.46
Non-Spinning Reserve Price (\$/MW)	0.80	0.93	0.86	-0.01	0.80	0.83	0.81	0.00
Regulation Up Bid Sufficiency Ratio*	184%	363%	253%	-51%	168%	252%	230%	-76%
Regulation Down Bid Sufficiency Ratio*	104%	367%	265%	-2%	140%	311%	186%	-11%
Spinning Reserve Bid Sufficiency Ratio*	93%	195%	132%	8%	118%	172%	150%	-12%
Non-Spinning Reserve Bid Sufficiency Ratio*	128%	281%	182%	17%	178%	247%	220%	9%
Total Cost of DA A/S (\$)	530,891				5,536			

* The Bid Sufficiency Ratio for a given market in a given hour is defined as the sum of capacity offers in MWs divided by the capacity requirement in MWs.