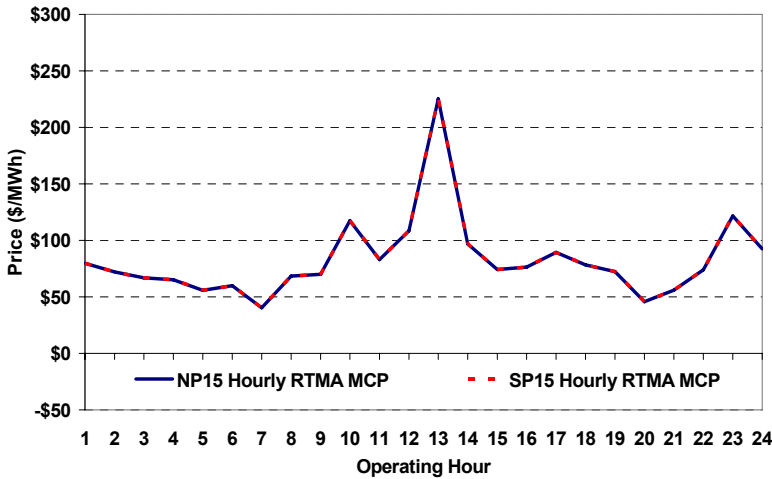
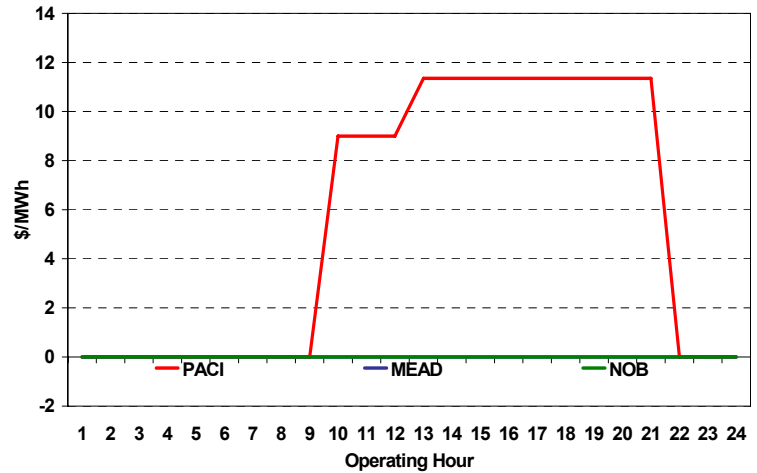


The content of this page is subject to change without notice. Decisions based on information contained herein are the visitor's responsibility.

Real-Time Hourly Average MCP



Selected Day Ahead Branch Group Congestion Prices

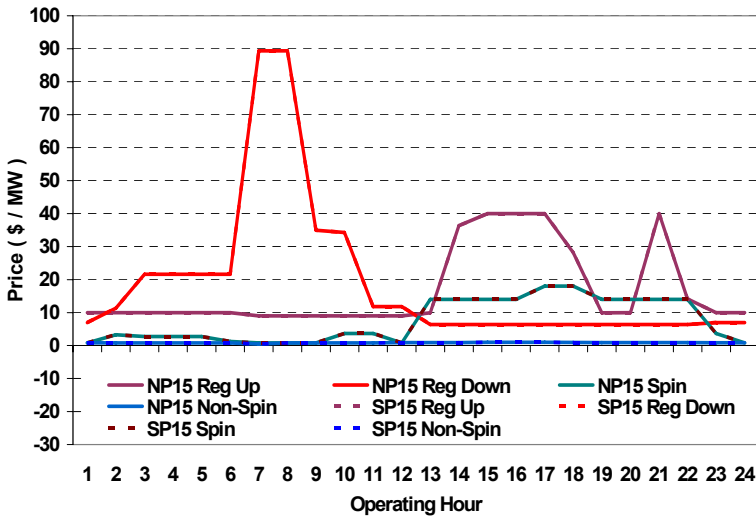


	NP15				SP15			
	Min	Max	Avg	Δ Avg.	Min	Max	Avg	Δ Avg.
Peak	\$ (0.01)	\$ 399.99	\$ 85.94	\$ (17.90)	\$ (0.01)	\$ 399.99	\$ 85.94	\$ (17.90)
Off-Peak	\$ 37.91	\$ 391.19	\$ 72.05	\$ 12.76	\$ 37.91	\$ 391.19	\$ 72.05	\$ 12.76

Day-Ahead Inter-Zonal Congestion Market: 26-Jul, 2008

Branch Group	Congestion Cost		Total	Total Cost Percent
	Import	Export		
PACI	\$ 347,032	\$ -	\$ 347,032	100%
MEAD	\$ 1	\$ -	\$ 1	0%
NOB	\$ -	\$ -	\$ -	0%

Day Ahead A/S Market Clearing Prices



Intrazonal Congestion: Out-of-Sequence Redispatch Costs

	Inc MWh	Inc Redispatch Costs	Dec MWh	Dec Redispatch Costs
Peak	749	109,152	-203	15,286
Off-Peak	473	53,962	0	0
Total	1,222	\$ 163,113	-204	\$ 15,287

Reliability: Must-Offer Unit Commitments

Commitment Type	Avg Hrlly P-Min MW	Daily Min-Load Cost
FERCMO	0	\$0
RA	22	\$57,147
Totals	22	\$57,147

Loads:

Peak Load	37,568 MW	Average Load	30682 MW
Time of peak	16:21	Δ Peak from Prev. Day	-2,753 MW

Day Ahead (DA) Market Summary: Ancillary Services (A/S) Capacity	Peak				Off-Peak			
	Min	Max	Avg.	Δ Avg.	Min	Max	Avg.	Δ Avg.
Regulation Up Price (\$/MW)	9.00	40.00	20.16	-1.52	10.00	10.00	10.00	-0.81
Regulation Down Price (\$/MW)	6.38	89.36	20.97	6.57	7.00	21.61	14.85	4.87
Spinning Reserve Price (\$/MW)	0.80	18.00	9.91	-17.03	0.80	3.65	2.25	-0.74
Non-Spinning Reserve Price (\$/MW)	0.50	1.00	0.88	-0.70	0.80	0.83	0.81	-0.03
Regulation Up Bid Sufficiency Ratio*	206%	426%	304%	48%	186%	350%	306%	39%
Regulation Down Bid Sufficiency Ratio*	100%	364%	268%	-69%	129%	352%	197%	-58%
Spinning Reserve Bid Sufficiency Ratio*	80%	215%	124%	-2%	106%	187%	162%	-2%
Non-Spinning Reserve Bid Sufficiency Ratio*	112%	277%	165%	1%	161%	240%	211%	-6%
Total Cost of DA A/S (\$)			525,354	-261,297				

* The Bid Sufficiency Ratio for a given market in a given hour is defined as the sum of capacity offers in MWs divided by the capacity requirement in MWs.