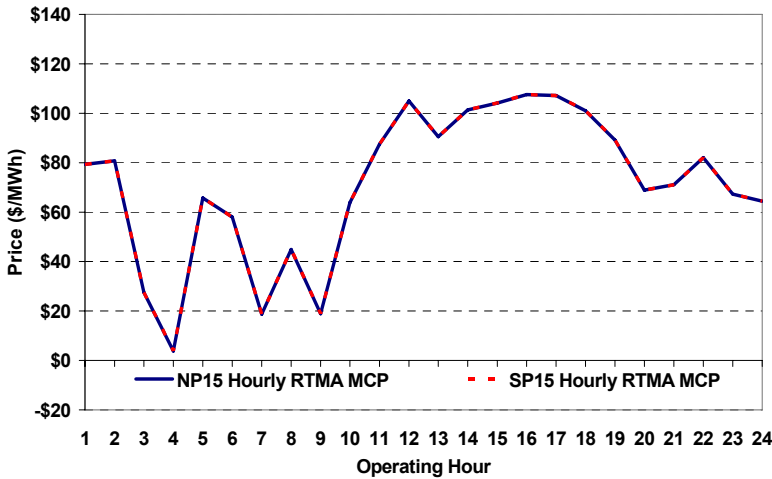
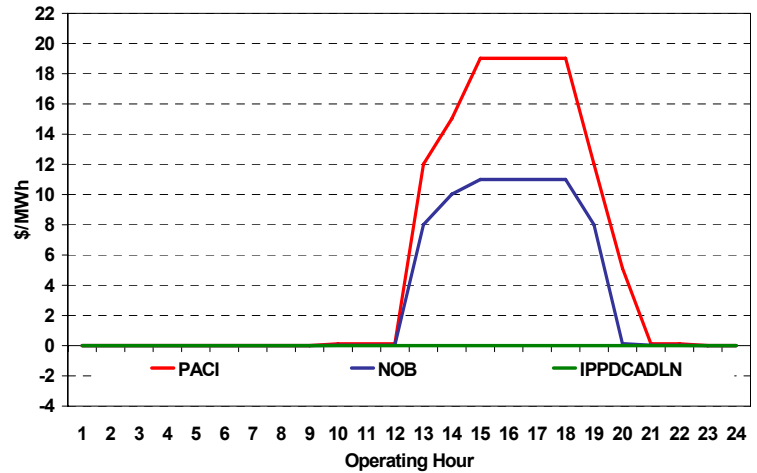


The content of this page is subject to change without notice. Decisions based on information contained herein are the visitor's responsibility.

Real-Time Hourly Average MCP



Selected Day Ahead Branch Group Congestion Prices

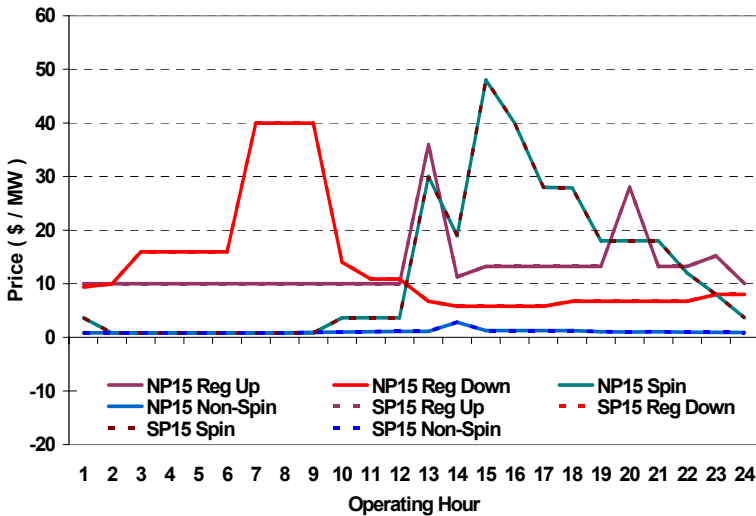


	NP15				SP15			
	Min	Max	Avg	Δ Avg.	Min	Max	Avg	Δ Avg.
Peak	\$ (20.00)	\$ 156.94	\$ 82.23	\$ 2.42	\$ (20.00)	\$ 156.94	\$ 82.23	\$ 2.42
Off-Peak	\$ (30.00)	\$ 120.00	\$ 58.51	\$ 8.83	\$ (30.00)	\$ 120.00	\$ 58.51	\$ 8.83

Day-Ahead Inter-Zonal Congestion Market: 18-Jul, 2008

Branch Group	Congestion Cost		Total	Total Cost Percent
	Import	Export		
PACI	\$ 320,695	\$ -	\$ 320,695	74%
NOB	\$ 111,835	\$ -	\$ 111,835	26%
IPPDCADLN	\$ 5	\$ -	\$ 5	0%

Day Ahead A/S Market Clearing Prices



Intrazonal Congestion: Out-of-Sequence Redispatch Costs

	Inc MWh	Inc Redispatch Costs	Dec MWh	Dec Redispatch Costs
Peak	97	29,084	-77	852
Off-Peak	103	13,115	-667	15,670
Total	200	\$ 42,199	-745	\$ 16,522

Reliability: Must-Offer Unit Commitments

Commitment Type	Avg Hrlly P-Min MW	Daily Min-Load Cost
FERCMOO	0	\$0
RA	393	\$917,954
Totals	393	\$917,954

Loads:

Peak Load	39,153 MW	Average Load	32121 MW
Time of peak	16:26	Δ Peak from Prev. Day	-1,386 MW

Day Ahead (DA) Market Summary: Ancillary Services (A/S) Capacity	Peak				Off-Peak			
	Min	Max	Avg.	Δ Avg.	Min	Max	Avg.	Δ Avg.
Regulation Up Price (\$/MW)	10.00	35.97	14.25	-9.15	10.00	15.18	10.65	-0.18
Regulation Down Price (\$/MW)	5.81	39.97	13.71	4.85	8.00	15.97	12.41	2.66
Spinning Reserve Price (\$/MW)	0.81	48.00	17.02	-4.56	0.81	8.00	2.42	-1.51
Non-Spinning Reserve Price (\$/MW)	0.81	2.81	1.17	-0.75	0.81	0.92	0.85	-0.05
Regulation Up Bid Sufficiency Ratio*	177%	391%	273%	-2%	139%	322%	278%	-17%
Regulation Down Bid Sufficiency Ratio*	180%	501%	367%	-35%	183%	393%	241%	-16%
Spinning Reserve Bid Sufficiency Ratio*	113%	223%	150%	9%	121%	207%	181%	5%
Non-Spinning Reserve Bid Sufficiency Ratio*	116%	281%	172%	13%	157%	258%	227%	17%
Total Cost of DA A/S (\$)			567,030	-148,216				

* The Bid Sufficiency Ratio for a given market in a given hour is defined as the sum of capacity offers in MWs divided by the capacity requirement in MWs.