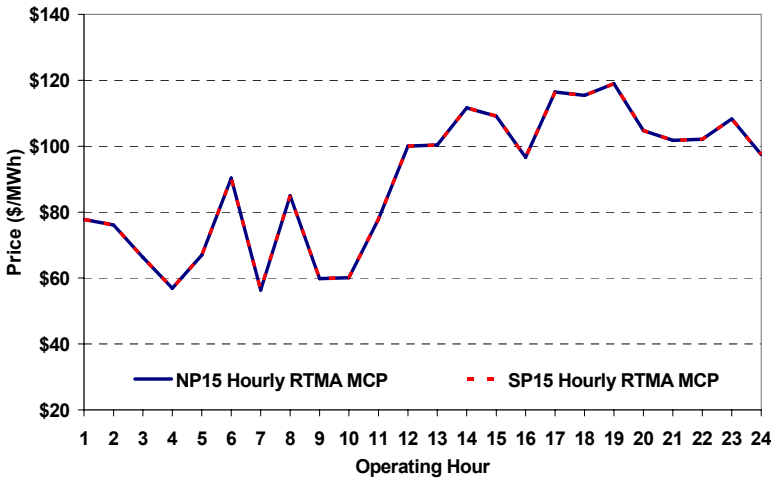
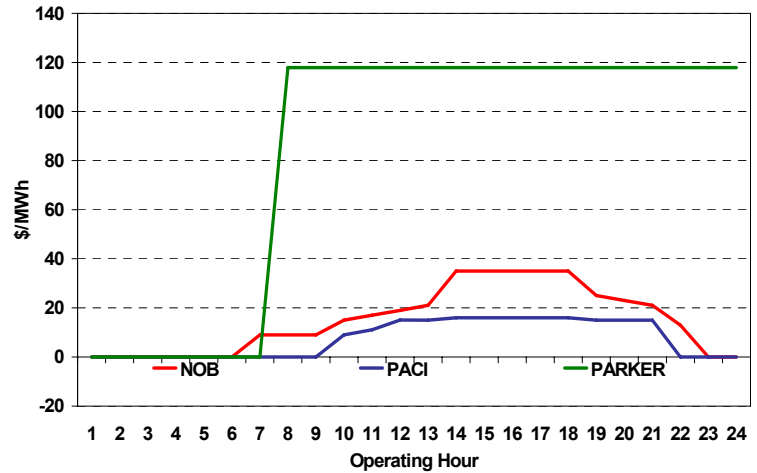


The content of this page is subject to change without notice. Decisions based on information contained herein are the visitor's responsibility.

Real-Time Hourly Average MCP



Selected Day Ahead Branch Group Congestion Prices

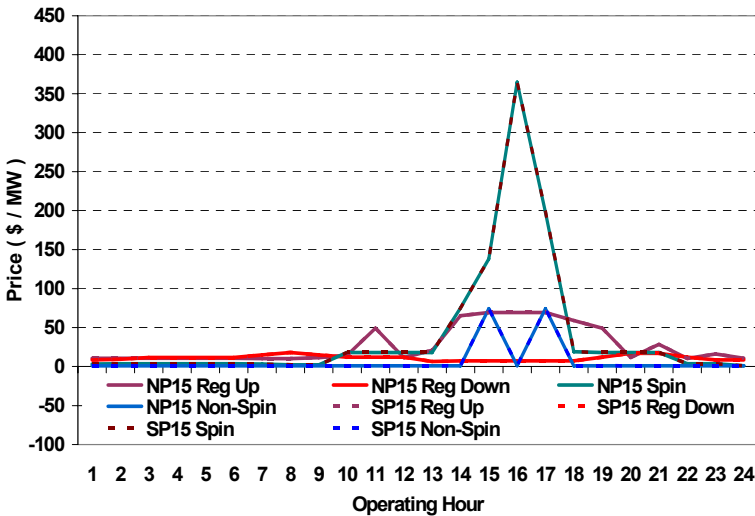


	NP15				SP15			
	Min	Max	Avg	Δ Avg.	Min	Max	Avg	Δ Avg.
RTMA MCP								
Peak	\$ (10.00)	\$ 225.00	\$ 97.59	\$ (9.34)	\$ (10.00)	\$ 225.00	\$ 97.59	\$ (9.34)
Off-Peak	\$ (0.01)	\$ 160.00	\$ 79.16	\$ 0.02	\$ (0.01)	\$ 160.00	\$ 79.16	\$ 0.02

Day-Ahead Inter-Zonal Congestion Market: 15-Jul, 2008

Branch Group	Congestion Cost		Total	Total Cost Percent
	Import	Export		
NOB	\$ 566,860	\$ -	\$ 566,860	49%
PACI	\$ 283,839	\$ -	\$ 283,839	24%
PARKER	\$ 260,553	\$ -	\$ 260,553	22%

Day Ahead A/S Market Clearing Prices



Intrazonal Congestion: Out-of-Sequence Redispatch Costs

	Inc MWh	Inc Redispatch Costs	Dec MWh	Dec Redispatch Costs
Peak	730	55,491	-25	2,058
Off-Peak	35	7,653	0	0
Total	764	\$ 63,144	-25	\$ 2,058

Reliability: Must-Offer Unit Commitments

Commitment Type	Avg Hrlly P-Min MW	Daily Min-Load Cost
FERCMOO	0	\$0
RA	100	\$320,080
Totals	100	\$320,080

Loads:

Peak Load	40,195 MW	Average Load	32806 MW
Time of peak	16:01	Δ Peak from Prev. Day	-994 MW

Day Ahead (DA) Market Summary: Ancillary Services (A/S) Capacity	Peak				Off-Peak			
	Min	Max	Avg.	Δ Avg.	Min	Max	Avg.	Δ Avg.
Regulation Up Price (\$/MW)	10.26	69.36	35.01	10.30	10.55	15.99	11.23	-4.91
Regulation Down Price (\$/MW)	6.43	18.00	11.55	-4.90	8.52	11.61	10.18	-11.63
Spinning Reserve Price (\$/MW)	2.20	364.65	58.25	48.51	0.80	3.65	3.25	1.38
Non-Spinning Reserve Price (\$/MW)	0.82	74.21	10.12	9.24	0.82	0.91	0.84	0.03
Regulation Up Bid Sufficiency Ratio*	147%	352%	258%	-18%	218%	307%	278%	-23%
Regulation Down Bid Sufficiency Ratio*	144%	414%	294%	14%	182%	283%	218%	88%
Spinning Reserve Bid Sufficiency Ratio*	84%	191%	131%	-29%	143%	194%	179%	-4%
Non-Spinning Reserve Bid Sufficiency Ratio*	100%	250%	166%	-24%	186%	238%	222%	-16%
Total Cost of DA A/S (\$)			1,567,016	1,025,478				

* The Bid Sufficiency Ratio for a given market in a given hour is defined as the sum of capacity offers in MWs divided by the capacity requirement in MWs.