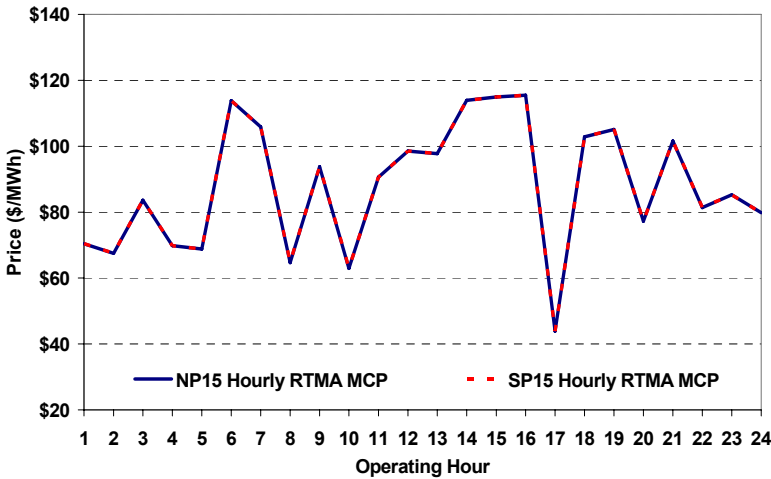
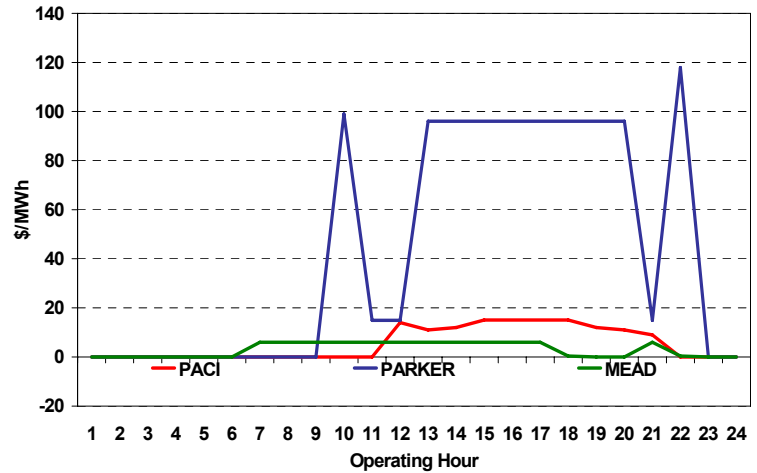


The content of this page is subject to change without notice. Decisions based on information contained herein are the visitor's responsibility.

Real-Time Hourly Average MCP



Selected Day Ahead Branch Group Congestion Prices

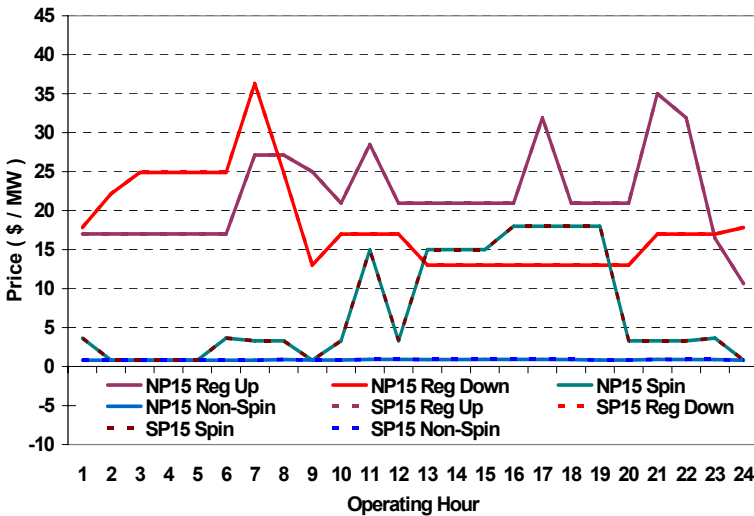


	NP15				SP15			
	Min	Max	Avg	Δ Avg.	Min	Max	Avg	Δ Avg.
Peak	\$ (10.00)	\$ 399.99	\$ 106.93	\$ (9.19)	\$ (10.00)	\$ 399.99	\$ 106.93	\$ (9.19)
Off-Peak	\$ 1.10	\$ 130.00	\$ 79.14	\$ (12.09)	\$ 1.10	\$ 130.00	\$ 79.14	\$ (12.09)

Day-Ahead Inter-Zonal Congestion Market: 14-Jul, 2008

Branch Group	Congestion Cost		Total	Total Cost Percent
	Import	Export		
PACI	\$ 342,498	\$ -	\$ 342,498	60%
PARKER	\$ 133,883	\$ -	\$ 133,883	23%
MEAD	\$ 49,089	\$ -	\$ 49,089	9%

Day Ahead A/S Market Clearing Prices



Intrazonal Congestion: Out-of-Sequence Redispatch Costs

	Inc MWh	Inc Redispatch Costs	Dec MWh	Dec Redispatch Costs
Peak	458	79,349	-513	65,430
Off-Peak	91	26,017	-114	7,428
Total	549	\$ 105,366	-628	\$ 72,858

Reliability: Must-Offer Unit Commitments

Commitment Type	Avg Hrlly P-Min MW	Daily Min-Load Cost
FERCMOO	0	\$0
RA	94	\$326,155
Totals	94	\$326,155

Loads:

Peak Load	41,190 MW	Average Load	33048 MW
Time of peak	16:00	Δ Peak from Prev. Day	4,135 MW

Day Ahead (DA) Market Summary: Ancillary Services (A/S) Capacity	Peak				Off-Peak			
	Min	Max	Avg.	Δ Avg.	Min	Max	Avg.	Δ Avg.
Regulation Up Price (\$/MW)	20.97	35.00	24.71	1.74	10.63	17.00	16.14	1.67
Regulation Down Price (\$/MW)	13.00	36.32	16.45	3.45	16.99	24.91	21.81	-2.45
Spinning Reserve Price (\$/MW)	0.81	18.00	9.74	6.71	0.81	3.65	1.88	-0.32
Non-Spinning Reserve Price (\$/MW)	0.81	0.92	0.88	0.02	0.80	0.90	0.81	0.01
Regulation Up Bid Sufficiency Ratio*	195%	358%	276%	-12%	259%	312%	301%	6%
Regulation Down Bid Sufficiency Ratio*	126%	398%	280%	68%	97%	205%	130%	13%
Spinning Reserve Bid Sufficiency Ratio*	114%	205%	161%	-5%	163%	192%	183%	20%
Non-Spinning Reserve Bid Sufficiency Ratio*	135%	273%	191%	-33%	191%	259%	238%	-13%
Total Cost of DA A/S (\$)			541,538	157,934				

* The Bid Sufficiency Ratio for a given market in a given hour is defined as the sum of capacity offers in MWs divided by the capacity requirement in MWs.