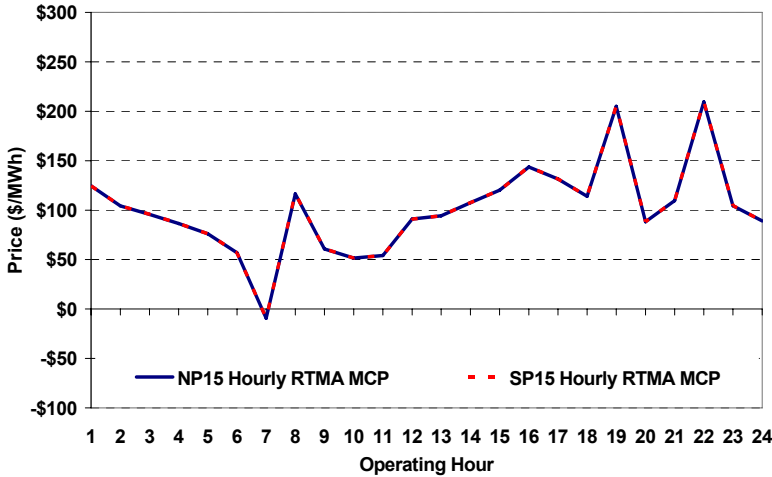
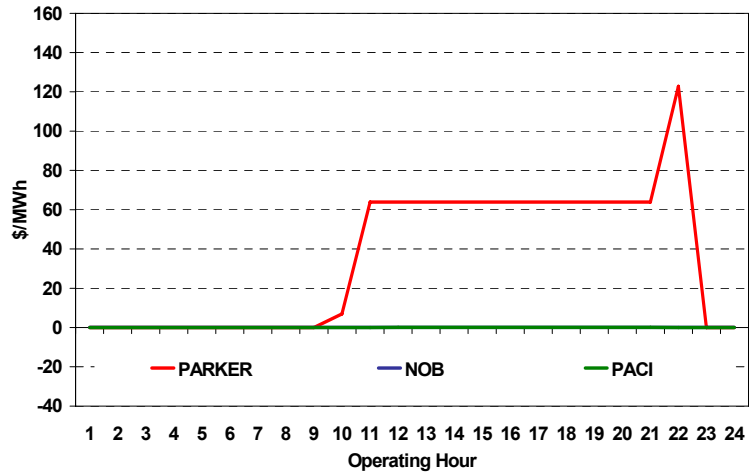


The content of this page is subject to change without notice. Decisions based on information contained herein are the visitor's responsibility.

### Real-Time Hourly Average MCP



### Selected Day Ahead Branch Group Congestion Prices

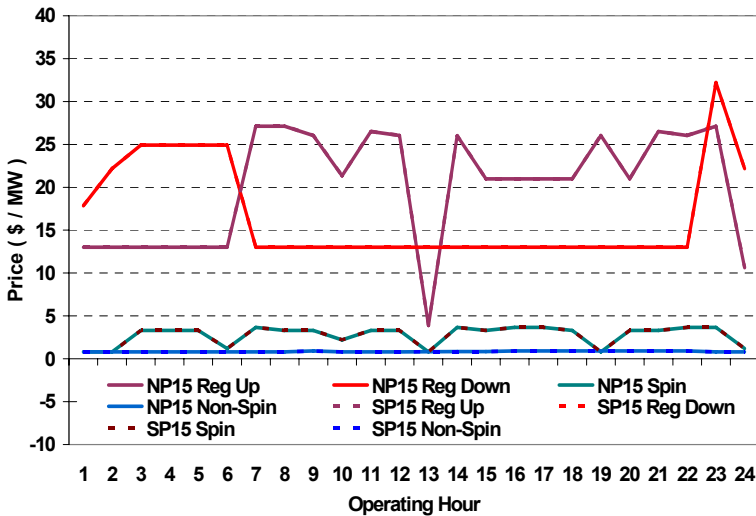


|                  | NP15       |           |           |          | SP15       |           |           |          |
|------------------|------------|-----------|-----------|----------|------------|-----------|-----------|----------|
|                  | Min        | Max       | Avg       | Δ Avg.   | Min        | Max       | Avg       | Δ Avg.   |
| RTMA MCP         |            |           |           |          |            |           |           |          |
| Hours 7-22       | \$ (30.00) | \$ 398.00 | \$ 116.12 | \$ 26.25 | \$ (30.00) | \$ 398.00 | \$ 116.12 | \$ 26.25 |
| Hours 1-6, 23-24 | \$ (0.01)  | \$ 150.00 | \$ 91.23  | \$ 0.39  | \$ (0.01)  | \$ 150.00 | \$ 91.23  | \$ 0.39  |

### Day-Ahead Inter-Zonal Congestion Market: 13-Jul, 2008

| Branch Group | Congestion Cost |        | Total      | Total Cost Percent |
|--------------|-----------------|--------|------------|--------------------|
|              | Import          | Export |            |                    |
| PARKER       | \$ 108,240      | \$ -   | \$ 108,240 | 99%                |
| NOB          | \$ 743          | \$ -   | \$ 743     | 1%                 |
| PACI         | \$ 598          | \$ -   | \$ 598     | 1%                 |

### Day Ahead A/S Market Clearing Prices



### Intrazonal Congestion: Out-of-Sequence Redispatch Costs

|          | Inc MWh | Inc Redispatch Costs | Dec MWh | Dec Redispatch Costs |
|----------|---------|----------------------|---------|----------------------|
| Peak     | 839     | 55,763               | -345    | 4,917                |
| Off-Peak | 71      | 17,174               | -54     | 4,661                |
| Total    | 911     | \$ 72,937            | -399    | \$ 9,578             |

### Reliability: Must-Offer Unit Commitments

| Commitment Type | Avg Hrlly P-Min MW | Daily Min-Load Cost |
|-----------------|--------------------|---------------------|
| FERCMOO         | 0                  | \$0                 |
| RA              | 65                 | \$222,404           |
| <b>Totals</b>   | 65                 | \$222,404           |

### Loads:

|              |           |                       |          |
|--------------|-----------|-----------------------|----------|
| Peak Load    | 37,055 MW | Average Load          | 29980 MW |
| Time of peak | 17:01     | Δ Peak from Prev. Day | 721 MW   |

| Day Ahead (DA) Market Summary:<br>Ancillary Services (A/S) Capacity | Peak           |       |       |        | Off-Peak       |       |       |        |
|---|----------------|-------|-------|--------|----------------|-------|-------|--------|
|   | Min            | Max   | Avg.  | Δ Avg. | Min            | Max   | Avg.  | Δ Avg. |
| Regulation Up Price (\$/MW)   | 3.89           | 27.13 | 22.97 | -3.51  | 10.63          | 27.13 | 14.47 | -0.27  |
| Regulation Down Price (\$/MW)                                       | 13.00          | 13.00 | 13.00 | -7.43  | 17.84          | 32.22 | 24.26 | 0.27   |
| Spinning Reserve Price (\$/MW)                                      | 0.81           | 3.65  | 3.03  | -1.23  | 0.81           | 3.65  | 2.20  | -0.76  |
| Non-Spinning Reserve Price (\$/MW)                                  | 0.80           | 0.91  | 0.86  | 0.09   | 0.80           | 0.81  | 0.80  | 0.10   |
| Regulation Up Bid Sufficiency Ratio*                                | 222%           | 325%  | 288%  | 21%    | 266%           | 356%  | 295%  | 16%    |
| Regulation Down Bid Sufficiency Ratio*                              | 150%           | 240%  | 212%  | -76%   | 97%            | 177%  | 117%  | -7%    |
| Spinning Reserve Bid Sufficiency Ratio*                             | 146%           | 190%  | 165%  | 1%     | 145%           | 179%  | 163%  | -9%    |
| Non-Spinning Reserve Bid Sufficiency Ratio*                         | 184%           | 291%  | 224%  | 19%    | 223%           | 263%  | 251%  | 20%    |
| <b>Total Cost of DA A/S (\$)</b>                                    | <b>383,604</b> |       |       |        | <b>-84,193</b> |       |       |        |

\* The Bid Sufficiency Ratio for a given market in a given hour is defined as the sum of capacity offers in MWs divided by the capacity requirement in MWs.