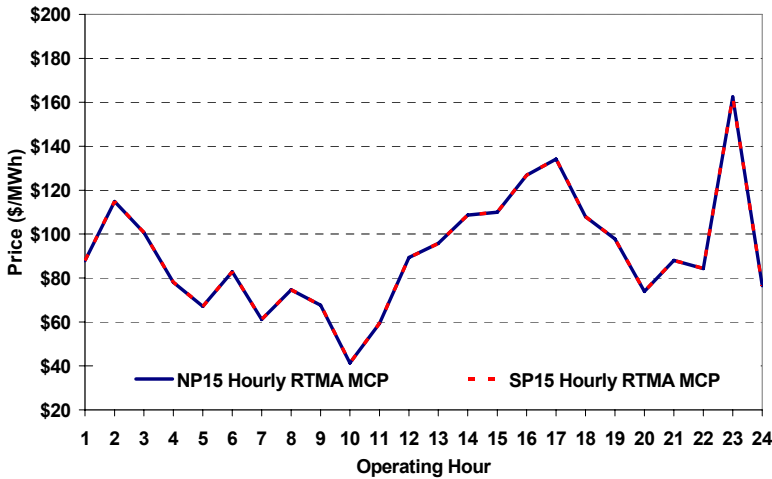
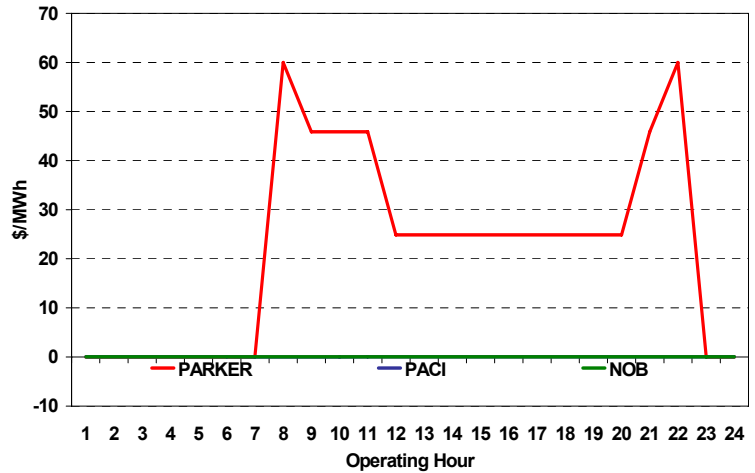


The content of this page is subject to change without notice. Decisions based on information contained herein are the visitor's responsibility.

Real-Time Hourly Average MCP



Selected Day Ahead Branch Group Congestion Prices

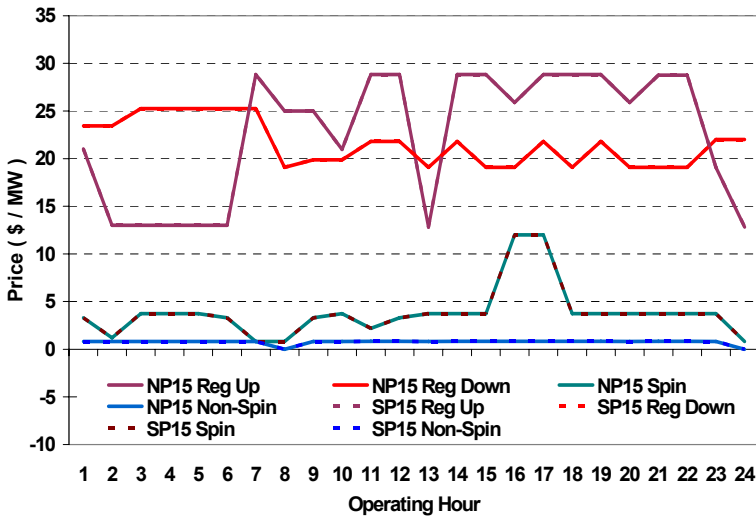


| | NP15 | | | | SP15 | | | |
|-----------------|------------|-----------|----------|----------|------------|-----------|----------|----------|
| | Min | Max | Avg | Δ Avg. | Min | Max | Avg | Δ Avg. |
| Peak | \$ (10.00) | \$ 220.00 | \$ 89.87 | \$ 19.36 | \$ (10.00) | \$ 220.00 | \$ 89.87 | \$ 19.36 |
| Off-Peak | \$ 20.00 | \$ 398.00 | \$ 90.84 | \$ 18.48 | \$ 20.00 | \$ 398.00 | \$ 90.84 | \$ 18.48 |

Day-Ahead Inter-Zonal Congestion Market: 12-Jul, 2008

| Branch Group | Congestion Cost | | Total | Total Cost Percent |
|---------------|-----------------|--------|-----------|--------------------|
| | Import | Export | | |
| PARKER | \$ 68,566 | \$ - | \$ 68,566 | 95% |
| PACI | \$ 2,280 | \$ - | \$ 2,280 | 3% |
| NOB | \$ 1,458 | \$ - | \$ 1,458 | 2% |

Day Ahead A/S Market Clearing Prices



Intrazonal Congestion: Out-of-Sequence Redispatch Costs

| | Inc MWh | Inc Redispatch Costs | Dec MWh | Dec Redispatch Costs |
|-----------------|---------|----------------------|---------|----------------------|
| Peak | 1,032 | 149,883 | -167 | 9,222 |
| Off-Peak | 707 | 91,607 | -122 | 9,456 |
| Total | 1,739 | \$ 241,491 | -289 | \$ 18,678 |

Reliability: Must-Offer Unit Commitments

| Commitment Type | Avg Hrlly P-Min MW | Daily Min-Load Cost |
|-----------------|--------------------|---------------------|
| FERCMO0 | 0 | \$0 |
| RA | 65 | \$230,131 |
| Totals | 65 | \$230,131 |

Loads:

| | | | |
|--------------|-----------|-----------------------|-----------|
| Peak Load | 36,334 MW | Average Load | 29895 MW |
| Time of peak | 15:59 | Δ Peak from Prev. Day | -2,272 MW |

| Day Ahead (DA) Market Summary: Ancillary Services (A/S) Capacity | Peak | | | | Off-Peak | | | |
|---|-------|-------|-------|----------------|----------|-------|-------|---------------|
| | Min | Max | Avg. | Δ Avg. | Min | Max | Avg. | Δ Avg. |
| Regulation Up Price (\$/MW) | 12.83 | 28.83 | 26.48 | 2.12 | 12.83 | 21.01 | 14.74 | -5.75 |
| Regulation Down Price (\$/MW) | 19.09 | 25.24 | 20.43 | 3.34 | 22.00 | 25.24 | 23.98 | 0.00 |
| Spinning Reserve Price (\$/MW) | 0.80 | 12.00 | 4.26 | 0.96 | 0.81 | 3.75 | 2.95 | 2.15 |
| Non-Spinning Reserve Price (\$/MW) | 0.00 | 0.83 | 0.77 | -0.11 | 0.00 | 0.81 | 0.71 | 0.28 |
| Regulation Up Bid Sufficiency Ratio* | 162% | 358% | 267% | -50% | 246% | 346% | 279% | -43% |
| Regulation Down Bid Sufficiency Ratio* | 126% | 447% | 288% | -76% | 98% | 208% | 124% | -6% |
| Spinning Reserve Bid Sufficiency Ratio* | 100% | 250% | 165% | 3% | 143% | 195% | 173% | -10% |
| Non-Spinning Reserve Bid Sufficiency Ratio* | 136% | 313% | 206% | 19% | 192% | 245% | 231% | 7% |
| Total Cost of DA A/S (\$) | | | | 467,797 | | | | 27,041 |

* The Bid Sufficiency Ratio for a given market in a given hour is defined as the sum of capacity offers in MWs divided by the capacity requirement in MWs.