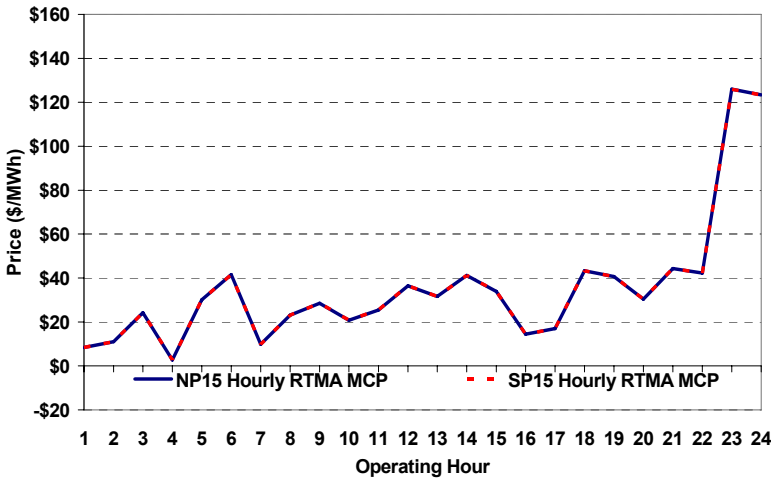
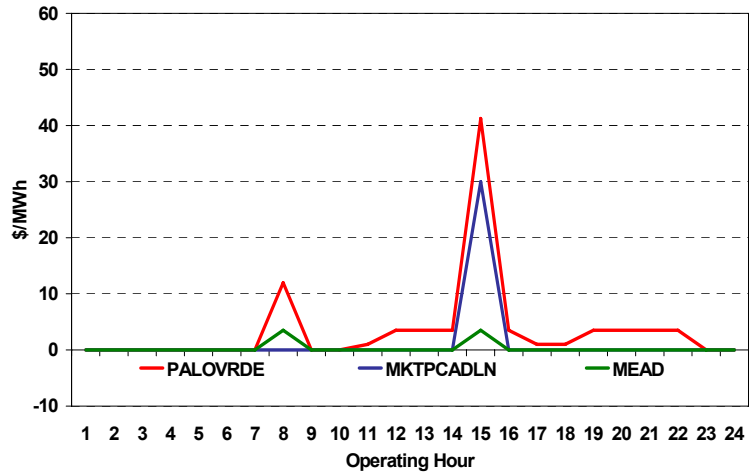


The content of this page is subject to change without notice. Decisions based on information contained herein are the visitor's responsibility.

Real-Time Hourly Average MCP



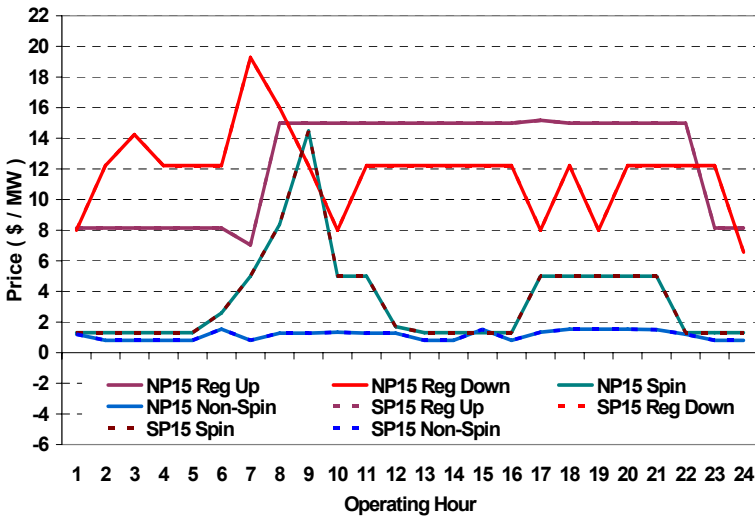
Selected Day Ahead Branch Group Congestion Prices



	NP15				SP15			
	Min	Max	Avg	Δ Avg.	Min	Max	Avg	Δ Avg.
Peak	\$ (2.00)	\$ 63.74	\$ 31.05	\$(14.87)	\$ (2.00)	\$ 63.74	\$ 31.05	\$(14.87)
Off-Peak	\$ (7.00)	\$ 392.00	\$ 38.40	\$ 9.29	\$ (7.00)	\$ 392.00	\$ 38.40	\$ 9.29

Day-Ahead Inter-Zonal Congestion Market: 27-Dec, 2006				
Branch Group	Congestion Cost		Total	Total Cost Percent
	Import	Export		
PALOVRDE	\$ 146,658	\$ -	\$ 146,658	87%
IPPDCADLN	\$ 12,691	\$ -	\$ 12,691	7%
PACI	\$ 4,694	\$ -	\$ 4,694	3%

Day Ahead A/S Market Clearing Prices



Intrazonal Congestion: Out-of-Sequence Redispatch Costs				
	Inc MWh	Inc Redispatch Costs	Dec MWh	Dec Redispatch Costs
Peak	1,599	12,411	-4,100	7,620
Off-Peak	602	20,860	-998	54,427
Total	2,201	\$ 33,271	-5,098	\$ 62,048

Reliability: Must-Offer Unit Commitments		
Commitment Type	Unit P-Mins MWh	Minimum Load Cost
RA	1,360	\$80,473
	0	\$0
Totals	1,360	\$80,473

Loads:			
Peak Load	31,360 MW	Average Load	25677 MW
Time of peak	17:57	Δ Peak from Prev. Day	364 MW

Day Ahead (DA) Market Summary: Ancillary Services (A/S) Capacity	Peak				Off-Peak			
	Min	Max	Avg.	Δ Avg.	Min	Max	Avg.	Δ Avg.
Regulation Up Price (\$/MW)	7.03	15.17	14.50	4.44	8.13	8.13	8.13	-3.91
Regulation Down Price (\$/MW)	8.00	19.28	12.11	-2.11	6.56	14.24	11.24	-6.68
Spinning Reserve Price (\$/MW)	1.30	14.47	4.44	-4.07	1.30	2.59	1.46	-2.56
Non-Spinning Reserve Price (\$/MW)	0.80	1.53	1.23	0.30	0.80	1.53	0.94	0.13
Regulation Up Bid Sufficiency Ratio*	145%	218%	178%	3%	113%	245%	197%	-17%
Regulation Down Bid Sufficiency Ratio*	116%	248%	184%	-13%	87%	223%	131%	1%
Spinning Reserve Bid Sufficiency Ratio*	109%	169%	142%	29%	133%	218%	178%	7%
Non-Spinning Reserve Bid Sufficiency Ratio*	124%	215%	171%	-5%	172%	243%	217%	-20%
Total Cost of DA A/S (\$)			288,990	-83,536				

* The Bid Sufficiency Ratio for a given market in a given hour is defined as the sum of capacity offers in MWs divided by the capacity requirement in MWs.