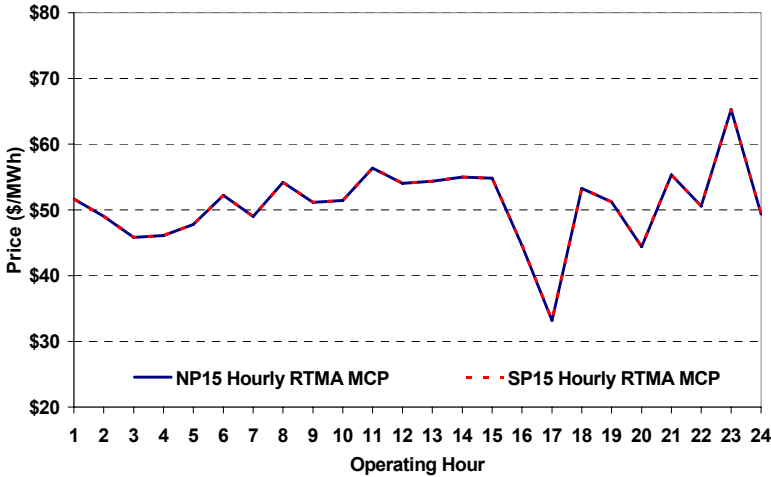
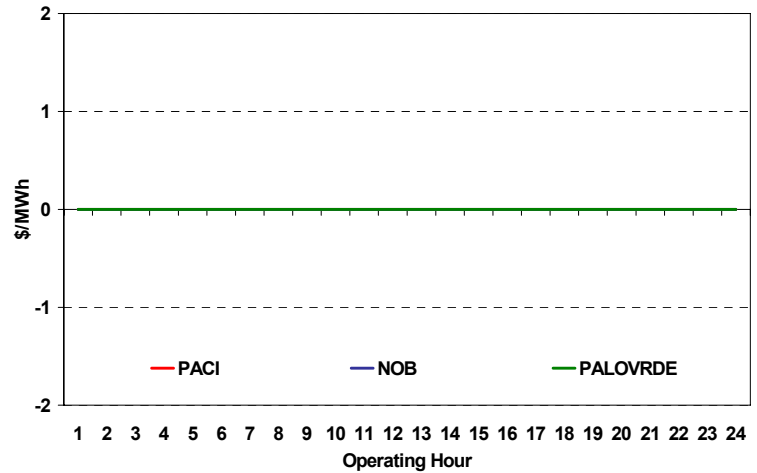


Real-Time Hourly Average MCP



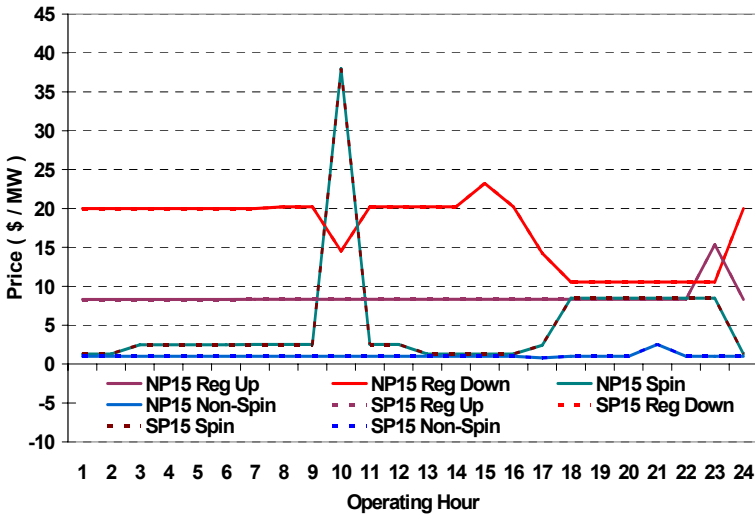
Selected Day Ahead Branch Group Congestion Prices



	NP15				SP15			
	Min	Max	Avg	Δ Avg.	Min	Max	Avg	Δ Avg.
RTMA MCP								
Hours 7-22	\$ 15.00	\$ 88.82	\$ 51.21	\$ 8.13	\$ 15.00	\$ 88.82	\$ 51.21	\$ 8.13
Hours 1-6, 23-24	\$ 17.00	\$ 88.82	\$ 50.70	\$ 8.51	\$ 17.00	\$ 88.82	\$ 50.70	\$ 8.51

Branch Group	Congestion Cost		Total	Total Cost Percent
	Import	Export		
PALOVRDE	\$ -	\$ -	\$ -	0%
IPPDCADLN	\$ -	\$ -	\$ -	0%
PACI	\$ -	\$ -	\$ -	0%

Day Ahead A/S Market Clearing Prices



	Inc MWh	Inc Redispatch Costs	Dec MWh	Dec Redispatch Costs
Peak	0	0	-1,340	3,627
Off-Peak	924	9,657	-37	0
Total	924	\$ 9,657	-1,377	\$ 3,627

Commitment Type	Unit P-Mins MWh	Minimum Load Cost
	0	\$0
	0	\$0
Totals	0	\$0

Peak Load	28,673 MW	Average Load	23835 MW
Time of peak	17:44	Δ Peak from Prev. Day	-1,095 MW

Day Ahead (DA) Market Summary: Ancillary Services (A/S) Capacity	Peak				Off-Peak			
	Min	Max	Avg.	Δ Avg.	Min	Max	Avg.	Δ Avg.
Regulation Up Price (\$/MW)	8.34	8.34	8.34	-0.23	8.31	15.36	9.19	1.29
Regulation Down Price (\$/MW)	10.56	23.23	16.65	5.19	10.56	20.00	18.82	0.09
Spinning Reserve Price (\$/MW)	1.30	38.00	6.28	3.10	1.30	8.45	2.78	0.55
Non-Spinning Reserve Price (\$/MW)	0.80	2.51	1.08	0.12	1.00	1.00	1.00	0.08
Regulation Up Bid Sufficiency Ratio*	101%	218%	157%	-37%	135%	229%	188%	-30%
Regulation Down Bid Sufficiency Ratio*	93%	260%	180%	-1%	81%	268%	114%	-4%
Spinning Reserve Bid Sufficiency Ratio*	86%	165%	119%	-26%	133%	195%	171%	-11%
Non-Spinning Reserve Bid Sufficiency Ratio*	144%	251%	195%	0%	205%	264%	251%	30%
Total Cost of DA A/S (\$)			320,184	63,534				

* The Bid Sufficiency Ratio for a given market in a given hour is defined as the sum of capacity offers in MWs divided by the capacity requirement in MWs.