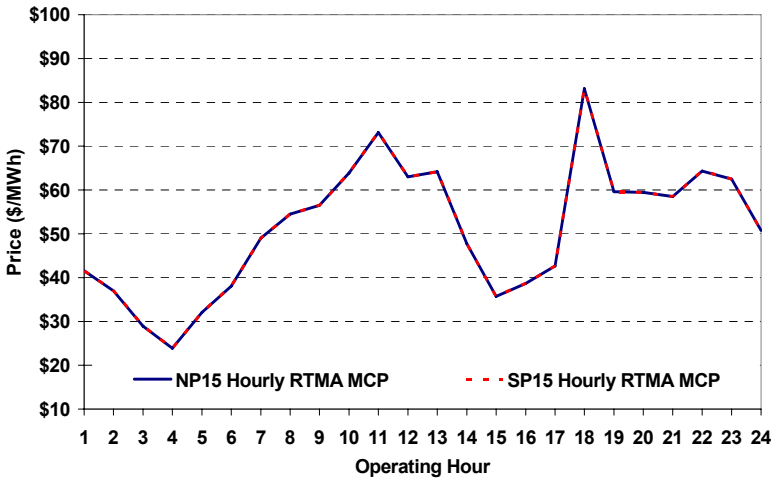
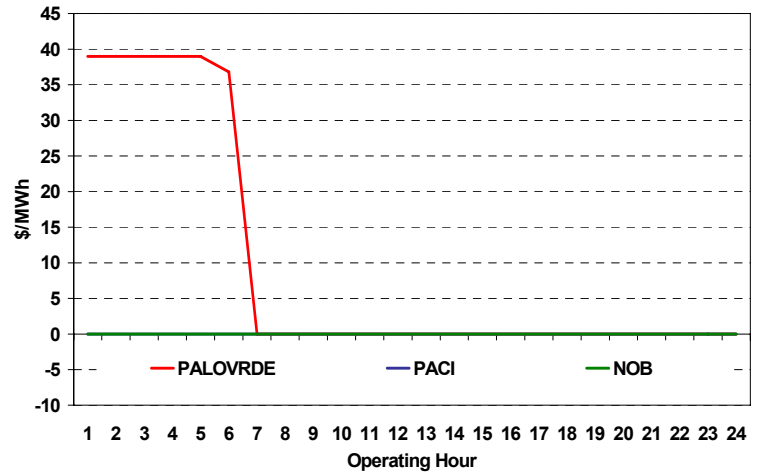


The content of this page is subject to change without notice. Decisions based on information contained herein are the visitor's responsibility.

Real-Time Hourly Average MCP



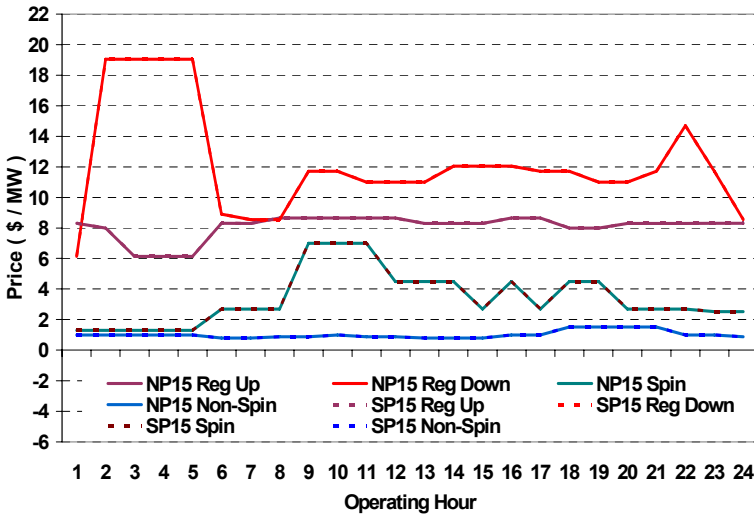
Selected Day Ahead Branch Group Congestion Prices



	NP15				SP15			
	Min	Max	Avg	Δ Avg.	Min	Max	Avg	Δ Avg.
Peak	\$ 14.00	\$105.00	\$ 57.19	\$ 7.66	\$ 14.00	\$105.00	\$ 57.19	\$ 7.66
Off-Peak	\$ 14.01	\$113.00	\$ 39.35	\$ (2.81)	\$ 14.01	\$113.00	\$ 39.35	\$ (2.81)

Branch Group	Congestion Cost		Total	Total Cost Percent
	Import	Export		
PALOVRDE	\$ 259,148	\$ -	\$ 259,148	100%
IPPDCADLN	\$ -	\$ -	\$ -	0%
PACI	\$ -	\$ -	\$ -	0%

Day Ahead A/S Market Clearing Prices



	Inc MWh	Inc Redispatch Costs	Dec MWh	Dec Redispatch Costs
Peak	0	0	-456	593
Off-Peak	0	0	-77	318
Total	0	\$ -	-533	\$ 911

Commitment Type	Unit P-Mins MWh	Minimum Load Cost
FERCMOO	240	\$59,642
RA	1,440	\$107,613
Totals	1,680	\$167,255

Peak Load	31,844 MW	Average Load	26774 MW
Time of peak	17:47	Δ Peak from Prev. Day	-1,898 MW

Day Ahead (DA) Market Summary:	Peak				Off-Peak			
	Min	Max	Avg.	Δ Avg.	Min	Max	Avg.	Δ Avg.
Ancillary Services (A/S) Capacity								
Regulation Up Price (\$/MW)	7.99	8.65	8.41	-7.09	6.14	8.31	7.46	-3.34
Regulation Down Price (\$/MW)	8.55	14.70	11.34	-0.74	6.14	19.04	13.93	3.21
Spinning Reserve Price (\$/MW)	2.69	7.00	4.18	-0.77	1.30	2.69	1.78	-1.34
Non-Spinning Reserve Price (\$/MW)	0.80	1.52	1.05	-0.22	0.80	1.00	0.96	-0.08
Regulation Up Bid Sufficiency Ratio*	145%	247%	188%	-24%	156%	246%	215%	29%
Regulation Down Bid Sufficiency Ratio*	132%	263%	218%	18%	122%	251%	145%	-1%
Spinning Reserve Bid Sufficiency Ratio*	95%	149%	116%	-38%	124%	202%	173%	0%
Non-Spinning Reserve Bid Sufficiency Ratio*	134%	202%	167%	-37%	176%	241%	223%	-14%
Total Cost of DA A/S (\$)			256,861	-67,735				

* The Bid Sufficiency Ratio for a given market in a given hour is defined as the sum of capacity offers in MWs divided by the capacity requirement in MWs.