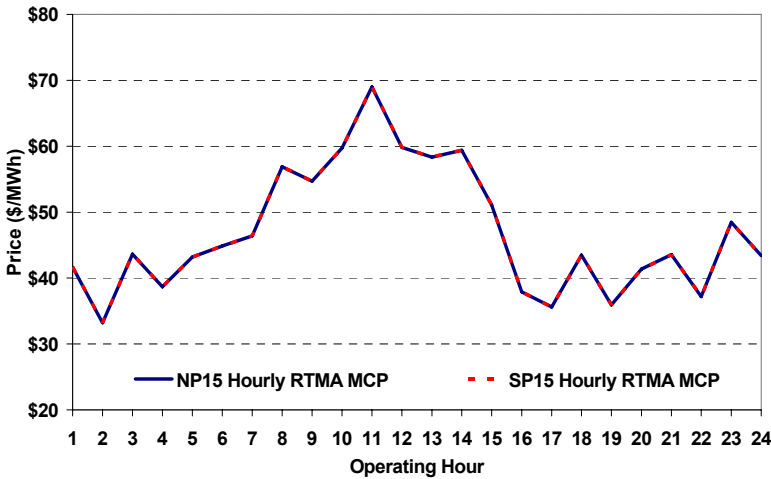
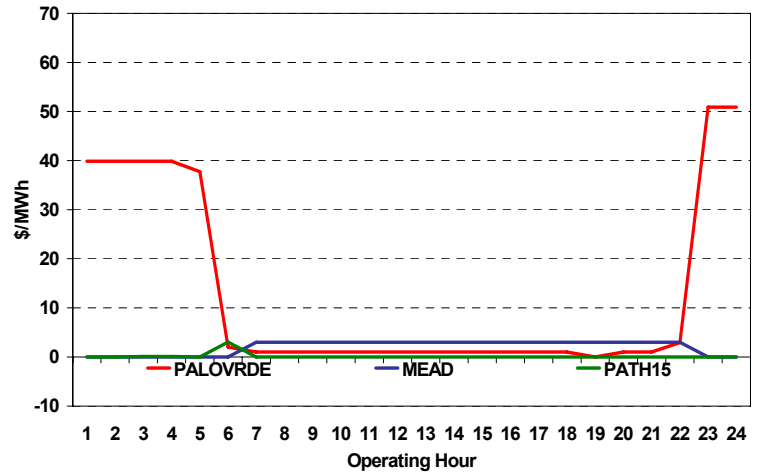


Real-Time Hourly Average MCP



Selected Day Ahead Branch Group Congestion Prices

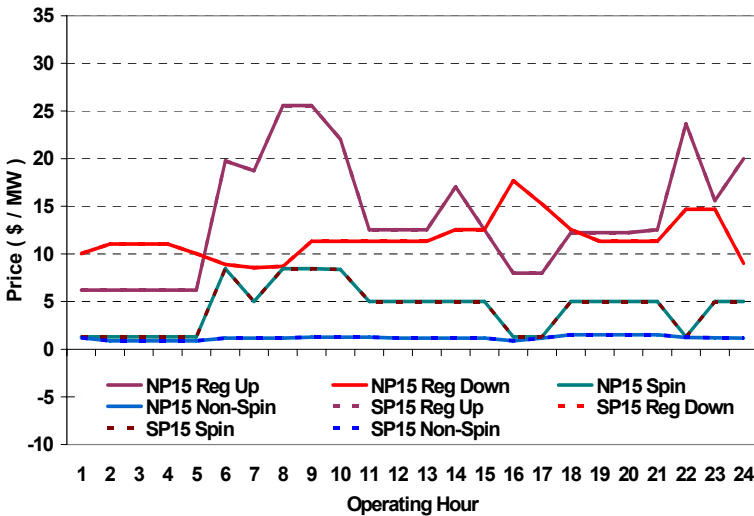


	NP15				SP15			
	Min	Max	Avg	Δ Avg.	Min	Max	Avg	Δ Avg.
Peak	\$ 15.00	\$ 90.00	\$ 49.53	\$ (0.94)	\$ 15.00	\$ 90.00	\$ 49.53	\$ (0.94)
Off-Peak	\$ 20.00	\$ 90.00	\$ 42.16	\$ (6.68)	\$ 20.00	\$ 90.00	\$ 42.16	\$ (6.68)

Day-Ahead Inter-Zonal Congestion Market: 21-Dec, 2006

Branch Group	Congestion Cost		Total	Total Cost Percent
	Import	Export		
PALOVRDE	\$ 355,534	\$ -	\$ 355,534	89%
IPPDCADLN	\$ 32,194	\$ -	\$ 32,194	8%
PACI	\$ 10,066	\$ -	\$ 10,066	3%

Day Ahead A/S Market Clearing Prices



Intrazonal Congestion: Out-of-Sequence Redispatch Costs

	Inc MWh	Inc Redispatch Costs	Dec MWh	Dec Redispatch Costs
Peak	250	30,482	-1,835	7,536
Off-Peak	924	17,050	-39	0
Total	1,175	\$ 47,531	-1,874	\$ 7,536

Reliability: Must-Offer Unit Commitments

Commitment Type	Unit P-Mins MWh	Minimum Load Cost
FERCMOO	240	\$60,287
RA	560	\$62,788
Totals	800	\$123,074

Loads:

Peak Load	33,742 MW	Average Load	28240 MW
Time of peak	17:51	Δ Peak from Prev. Day	-190 MW

Day Ahead (DA) Market Summary: Ancillary Services (A/S) Capacity	Peak				Off-Peak			
	Min	Max	Avg.	Δ Avg.	Min	Max	Avg.	Δ Avg.
Regulation Up Price (\$/MW)	7.99	25.57	15.50	1.40	6.21	20.00	10.80	3.06
Regulation Down Price (\$/MW)	8.56	17.70	12.08	-0.12	8.90	14.70	10.73	-0.14
Spinning Reserve Price (\$/MW)	1.30	8.45	4.95	-0.21	1.30	8.45	3.12	1.11
Non-Spinning Reserve Price (\$/MW)	0.88	1.53	1.27	-0.38	0.88	1.20	1.04	0.09
Regulation Up Bid Sufficiency Ratio*	157%	281%	212%	4%	115%	232%	186%	-3%
Regulation Down Bid Sufficiency Ratio*	120%	251%	199%	-62%	97%	220%	147%	-18%
Spinning Reserve Bid Sufficiency Ratio*	134%	204%	154%	10%	126%	200%	172%	-9%
Non-Spinning Reserve Bid Sufficiency Ratio*	177%	245%	204%	9%	192%	263%	237%	-3%
Total Cost of DA A/S (\$)				324,596				9,761

* The Bid Sufficiency Ratio for a given market in a given hour is defined as the sum of capacity offers in MWs divided by the capacity requirement in MWs.