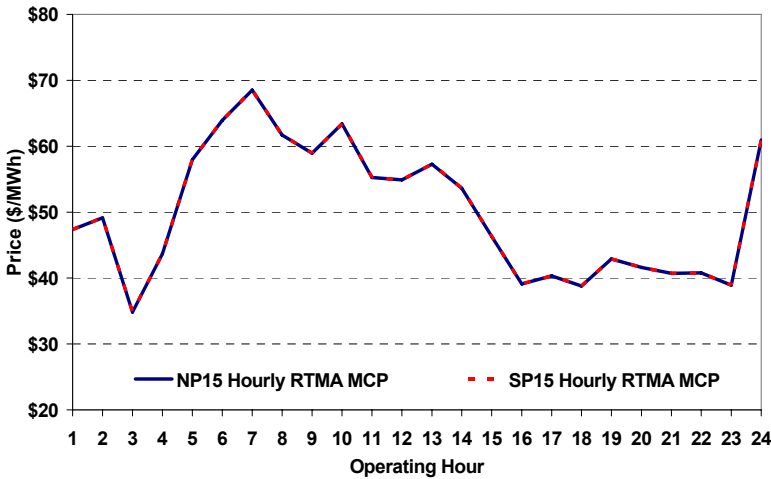
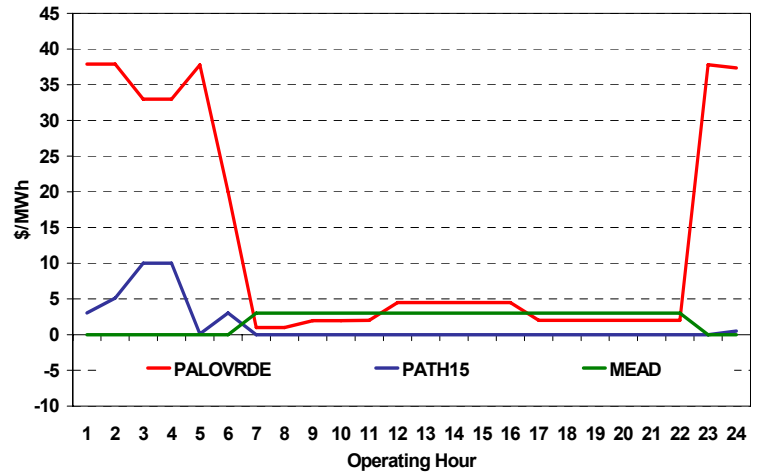


The content of this page is subject to change without notice. Decisions based on information contained herein are the visitor's responsibility.

Real-Time Hourly Average MCP



Selected Day Ahead Branch Group Congestion Prices

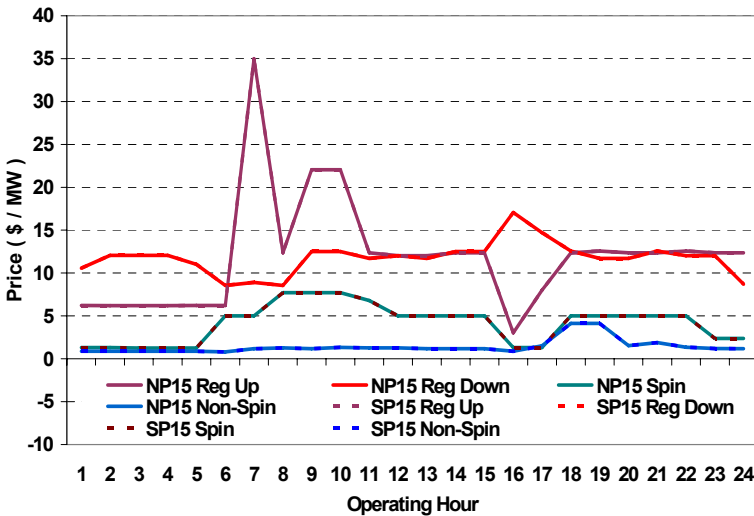


	NP15				SP15			
	Min	Max	Avg	Δ Avg.	Min	Max	Avg	Δ Avg.
Peak	\$ 15.86	\$ 95.00	\$ 50.47	\$(12.36)	\$ 15.86	\$ 95.00	\$ 50.47	\$(12.36)
Off-Peak	\$ 20.00	\$ 112.03	\$ 48.84	\$(34.23)	\$ 20.00	\$ 112.03	\$ 48.84	\$(16.94)

Day-Ahead Inter-Zonal Congestion Market: 20-Dec, 2006

Branch Group	Congestion Cost		Total	Total Cost Percent
	Import	Export		
PALOVRDE	\$ 354,505	\$ -	\$ 354,505	73%
IPPDCADLN	\$ 99,943	\$ -	\$ 99,943	21%
PACI	\$ 32,194	\$ -	\$ 32,194	7%

Day Ahead A/S Market Clearing Prices



Intrazonal Congestion: Out-of-Sequence Redispatch Costs

	Inc MWh	Inc Redispatch Costs	Dec MWh	Dec Redispatch Costs
Peak	340	8,713	-1,412	3,184
Off-Peak	117	3,850	-328	4,015
Total	457	\$ 12,563	-1,739	\$ 7,199

Reliability: Must-Offer Unit Commitments

Commitment Type	Unit P-Mins MWh	Minimum Load Cost
FERCMOO	240	\$57,347
RA	796	\$80,891
Totals	1,036	\$138,238

Loads:

Peak Load	33,932 MW	Average Load	28389 MW
Time of peak	18:16	Δ Peak from Prev. Day	-83 MW

Day Ahead (DA) Market Summary: Ancillary Services (A/S) Capacity	Peak				Off-Peak			
	Min	Max	Avg.	Δ Avg.	Min	Max	Avg.	Δ Avg.
Regulation Up Price (\$/MW)	3.01	35.00	14.10	-8.22	6.20	12.35	7.74	-2.56
Regulation Down Price (\$/MW)	8.56	17.04	12.20	-0.75	8.56	12.04	10.87	-2.05
Spinning Reserve Price (\$/MW)	1.30	7.70	5.16	-7.64	1.25	5.00	2.01	-1.73
Non-Spinning Reserve Price (\$/MW)	0.88	4.11	1.65	0.27	0.80	1.20	0.95	0.02
Regulation Up Bid Sufficiency Ratio*	162%	299%	208%	45%	112%	234%	188%	22%
Regulation Down Bid Sufficiency Ratio*	208%	305%	261%	69%	112%	212%	164%	25%
Spinning Reserve Bid Sufficiency Ratio*	130%	197%	144%	22%	119%	224%	181%	16%
Non-Spinning Reserve Bid Sufficiency Ratio*	169%	241%	195%	20%	191%	269%	240%	30%
Total Cost of DA A/S (\$)			314,835	-180,006				

* The Bid Sufficiency Ratio for a given market in a given hour is defined as the sum of capacity offers in MWs divided by the capacity requirement in MWs.