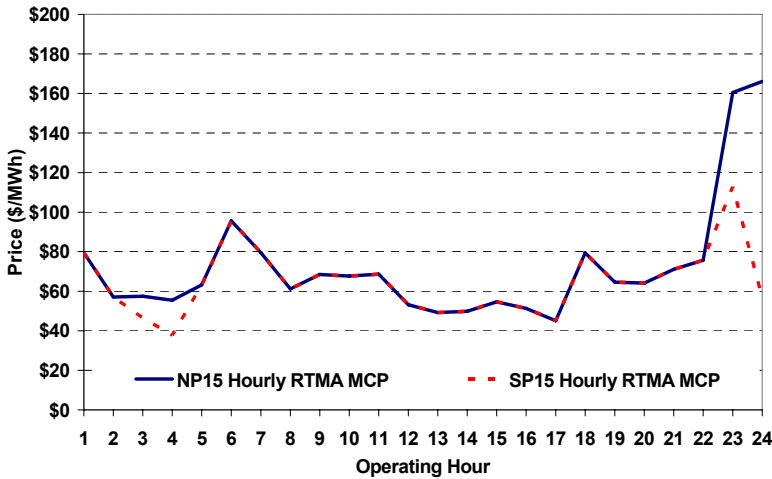
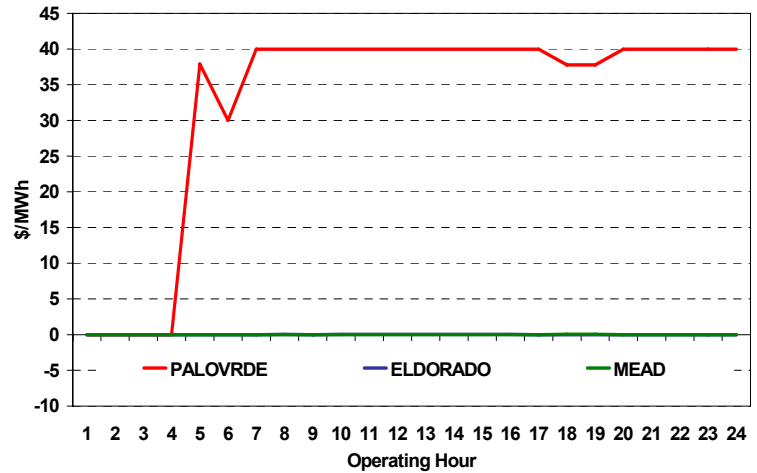


Real-Time Hourly Average MCP



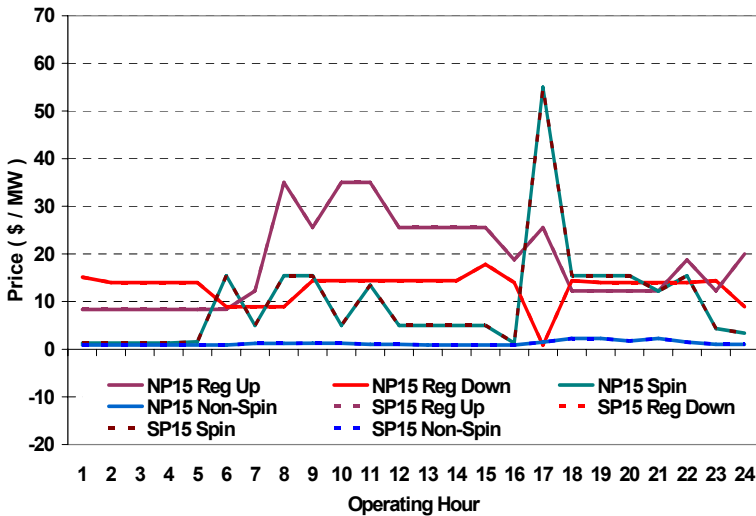
Selected Day Ahead Branch Group Congestion Prices



	NP15				SP15			
	Min	Max	Avg	Δ Avg.	Min	Max	Avg	Δ Avg.
Peak	\$ -	\$ 105.00	\$ 62.83	\$ 5.82	\$ -	\$ 105.00	\$ 62.83	\$ 5.82
Off-Peak	\$ 35.00	\$ 275.00	\$ 83.07	\$ 26.26	\$ 15.00	\$ 275.00	\$ 65.78	\$ 8.97

Branch Group	Congestion Cost		Total	Total Cost Percent
	Import	Export		
PALOVRDE	\$ 945,681	\$ -	\$ 945,681	100%
IPPDCADLN	\$ 375	\$ -	\$ 375	0%
PACI	\$ 158	\$ -	\$ 158	0%

Day Ahead A/S Market Clearing Prices



	Inc MWh	Inc Redispatch Costs	Dec MWh	Dec Redispatch Costs
Peak	0	0	-2,124	141,177
Off-Peak	0	0	-293	1,331
Total	0	\$ -	-2,417	\$ 142,508

Commitment Type	Unit P-Mins MWh	Minimum Load Cost
	0	\$0
	0	\$0
Totals	0	\$0

Peak Load	34,015 MW	Average Load	28341 MW
Time of peak	18:25	Δ Peak from Prev. Day	-341 MW

Day Ahead (DA) Market Summary: Ancillary Services (A/S) Capacity	Peak				Off-Peak			
	Min	Max	Avg.	Δ Avg.	Min	Max	Avg.	Δ Avg.
Regulation Up Price (\$/MW)	12.24	35.00	22.32	10.42	8.35	20.00	10.30	3.24
Regulation Down Price (\$/MW)	0.80	17.84	12.94	11.47	8.91	15.12	12.92	-0.99
Spinning Reserve Price (\$/MW)	1.30	55.00	12.79	8.19	1.30	15.45	3.74	2.30
Non-Spinning Reserve Price (\$/MW)	0.89	2.25	1.38	0.36	0.89	1.05	0.93	0.10
Regulation Up Bid Sufficiency Ratio*	110%	261%	163%	-48%	91%	216%	167%	-32%
Regulation Down Bid Sufficiency Ratio*	113%	234%	192%	46%	105%	185%	140%	7%
Spinning Reserve Bid Sufficiency Ratio*	108%	179%	122%	-24%	118%	204%	165%	-25%
Non-Spinning Reserve Bid Sufficiency Ratio*	156%	217%	175%	-19%	164%	229%	210%	-28%
Total Cost of DA A/S (\$)			494,841	273,952				

* The Bid Sufficiency Ratio for a given market in a given hour is defined as the sum of capacity offers in MWs divided by the capacity requirement in MWs.