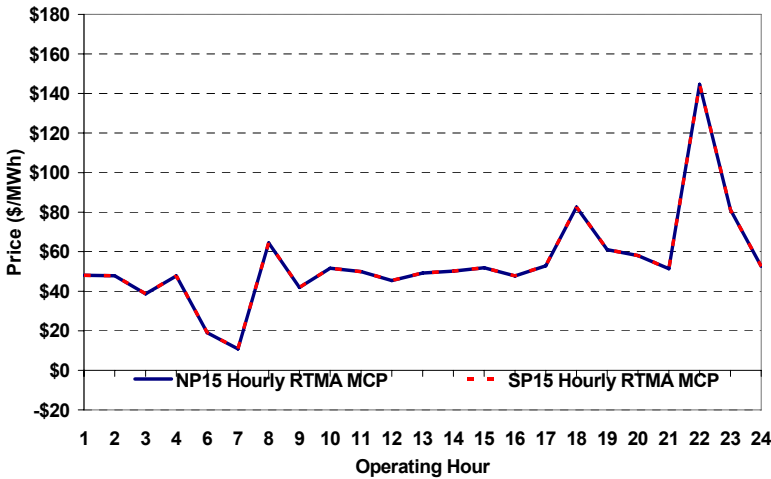
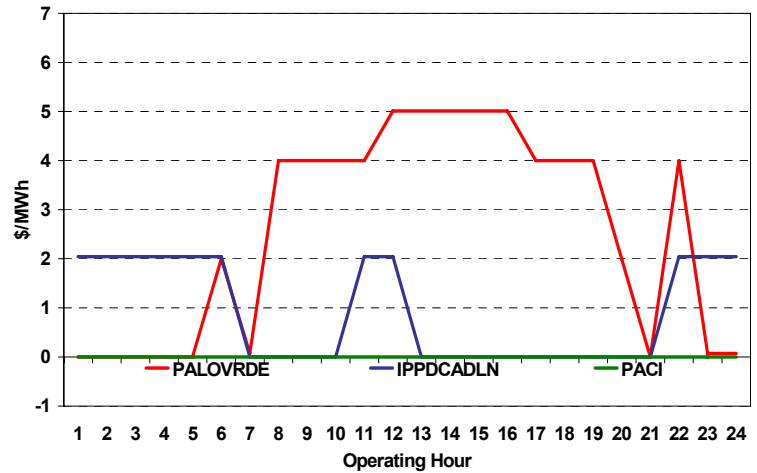


The content of this page is subject to change without notice. Decisions based on information contained herein are the visitor's responsibility.

Real-Time Hourly Average MCP



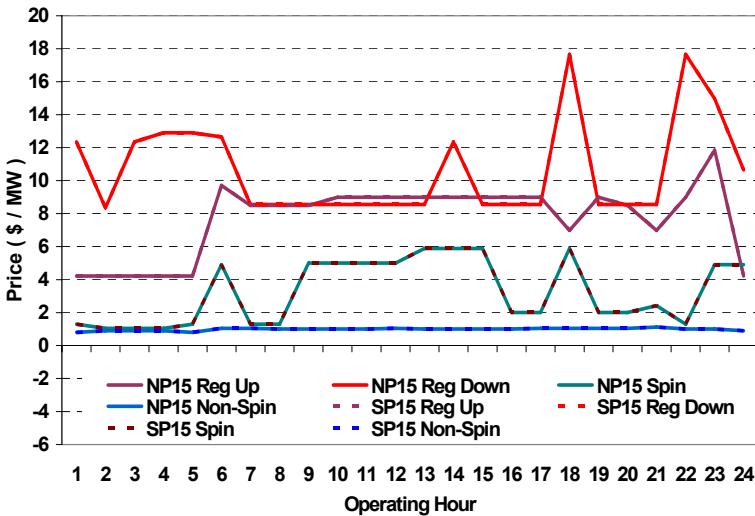
Selected Day Ahead Branch Group Congestion Prices



	NP15				SP15			
	Min	Max	Avg	Δ Avg.	Min	Max	Avg	Δ Avg.
Peak	\$ (30.00)	\$ 390.00	\$ 53.84	\$ (0.87)	\$ (30.00)	\$ 390.00	\$ 53.84	\$ (0.87)
Off-Peak	\$ (12.00)	\$ 138.00	\$ 47.17	\$ (3.42)	\$ (12.00)	\$ 138.00	\$ 47.17	\$ (3.42)

Day-Ahead Inter-Zonal Congestion Market: 13-Dec, 2006				
Branch Group	Congestion Cost		Total	Total Cost Percent
	Import	Export		
PALOVRDE	\$ 152,943	\$ -	\$ 152,943	91%
IPPDCADLN	\$ 14,551	\$ -	\$ 14,551	9%
PACI	\$ -	\$ -	\$ -	0%

Day Ahead A/S Market Clearing Prices



Intrazonal Congestion: Out-of-Sequence Redispatch Costs				
	Inc MWh	Inc Redispatch Costs	Dec MWh	Dec Redispatch Costs
Peak	2,437	53,641	-4,848	221,816
Off-Peak	0	0	-1,468	29,209
Total	2,437	\$ 53,641	-6,316	\$ 251,025

Reliability: Must-Offer Unit Commitments		
Commitment Type	Unit P-Mins MWh	Minimum Load Cost
	0	\$0
	0	\$0
Totals	0	\$0

Loads:			
Peak Load	33,127 MW	Average Load	27292 MW
Time of peak	17:55	Δ Peak from Prev. Day	-350 MW

Day Ahead (DA) Market Summary:	Peak				Off-Peak			
	Min	Max	Avg.	Δ Avg.	Min	Max	Avg.	Δ Avg.
Ancillary Services (A/S) Capacity								
Regulation Up Price (\$/MW)	6.99	8.99	8.62	1.03	4.22	11.85	5.86	0.22
Regulation Down Price (\$/MW)	8.55	17.66	9.93	0.95	8.35	14.97	12.14	1.75
Spinning Reserve Price (\$/MW)	1.30	5.89	3.62	-1.21	1.05	4.90	2.56	1.08
Non-Spinning Reserve Price (\$/MW)	1.00	1.12	1.03	-0.12	0.80	1.05	0.91	0.08
Regulation Up Bid Sufficiency Ratio*	172%	243%	208%	25%	159%	284%	240%	30%
Regulation Down Bid Sufficiency Ratio*	190%	281%	265%	55%	108%	270%	155%	23%
Spinning Reserve Bid Sufficiency Ratio*	117%	145%	126%	-14%	133%	254%	204%	-10%
Non-Spinning Reserve Bid Sufficiency Ratio*	168%	222%	188%	10%	223%	311%	277%	12%
Total Cost of DA A/S (\$)			238,137	7,801				

* The Bid Sufficiency Ratio for a given market in a given hour is defined as the sum of capacity offers in MWs divided by the capacity requirement in MWs.