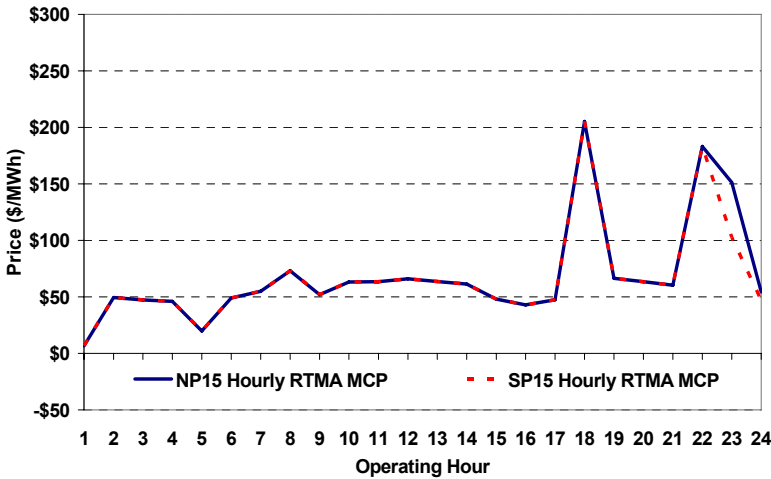
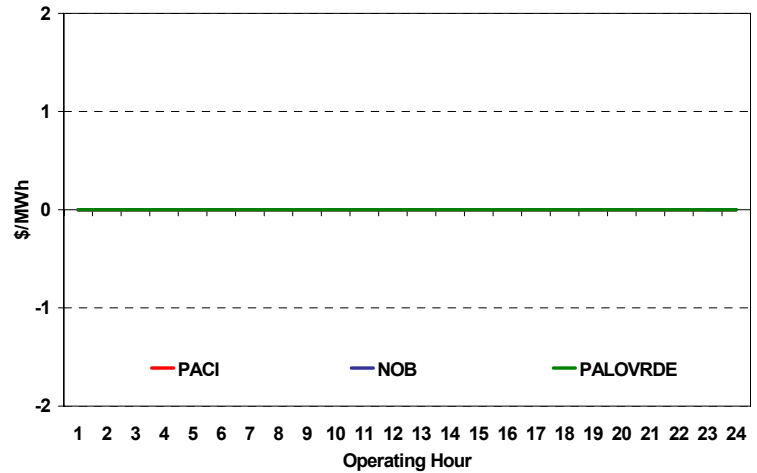


The content of this page is subject to change without notice. Decisions based on information contained herein are the visitor's responsibility.

### Real-Time Hourly Average MCP



### Selected Day Ahead Branch Group Congestion Prices

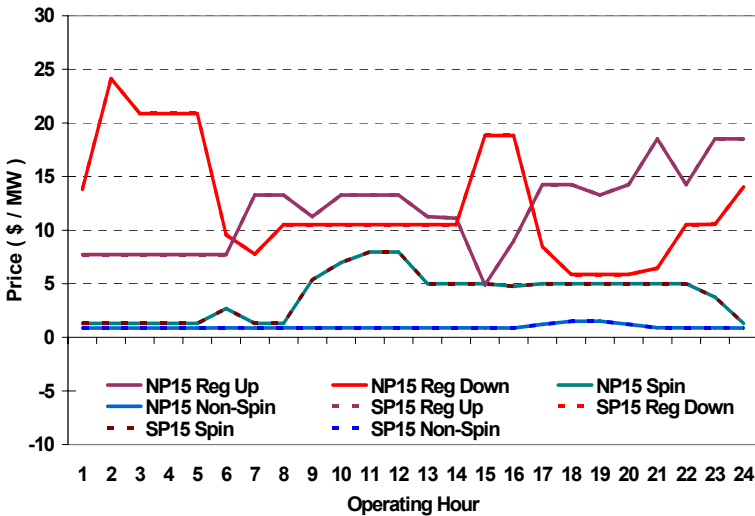


	NP15				SP15			
	Min	Max	Avg	Δ Avg.	Min	Max	Avg	Δ Avg.
<b>RTMA MCP</b>								
<b>Peak</b>	\$ 28.00	\$ 399.00	\$ 69.46	\$ 14.81	\$ 28.00	\$ 399.00	\$ 69.46	\$ 14.81
<b>Off-Peak</b>	\$ (20.00)	\$ 399.00	\$ 53.46	\$ 15.69	\$ (20.00)	\$ 399.00	\$ 48.18	\$ 10.41

### Day-Ahead Inter-Zonal Congestion Market: 11-Dec, 2006

Branch Group	Congestion Cost		Total	Total Cost Percent
	Import	Export		
PALOVRDE	\$ -	\$ -	\$ -	0%
IPPDCADLN	\$ -	\$ -	\$ -	0%
PACI	\$ -	\$ -	\$ -	0%

### Day Ahead A/S Market Clearing Prices



### Intrazonal Congestion: Out-of-Sequence Redispatch Costs

	Inc MWh	Inc Redispatch Costs	Dec MWh	Dec Redispatch Costs
<b>Peak</b>	0	0	-262	0
<b>Off-Peak</b>	805	36,797	-154	811
<b>Total</b>	805	\$ 36,797	-416	\$ 811

### Reliability: Must-Offer Unit Commitments

Commitment Type	Unit P-Mins MWh	Minimum Load Cost
RA	1,796	\$78,170
	0	\$0
<b>Totals</b>	1,796	\$78,170

### Loads:

Peak Load	33,663 MW	Average Load	27120 MW
Time of peak	17:51	Δ Peak from Prev. Day	3,426 MW

Day Ahead (DA) Market Summary: Ancillary Services (A/S) Capacity	Peak				Off-Peak			
	Min	Max	Avg.	Δ Avg.	Min	Max	Avg.	Δ Avg.
Regulation Up Price (\$/MW)	4.89	18.52	12.67	1.12	7.72	18.52	10.42	3.31
Regulation Down Price (\$/MW)	5.86	18.84	10.12	0.92	9.56	24.14	16.84	-1.29
Spinning Reserve Price (\$/MW)	1.30	7.97	5.04	2.72	1.29	3.75	1.78	0.48
Non-Spinning Reserve Price (\$/MW)	0.87	1.51	1.01	0.05	0.87	0.89	0.88	0.05
Regulation Up Bid Sufficiency Ratio*	175%	261%	201%	15%	121%	255%	222%	-8%
Regulation Down Bid Sufficiency Ratio*	115%	258%	196%	6%	84%	221%	131%	10%
Spinning Reserve Bid Sufficiency Ratio*	102%	159%	129%	-31%	136%	225%	193%	-18%
Non-Spinning Reserve Bid Sufficiency Ratio*	143%	199%	169%	-11%	180%	257%	225%	-3%
<b>Total Cost of DA A/S (\$)</b>			<b>300,049</b>	<b>61,890</b>				

\* The Bid Sufficiency Ratio for a given market in a given hour is defined as the sum of capacity offers in MWs divided by the capacity requirement in MWs.