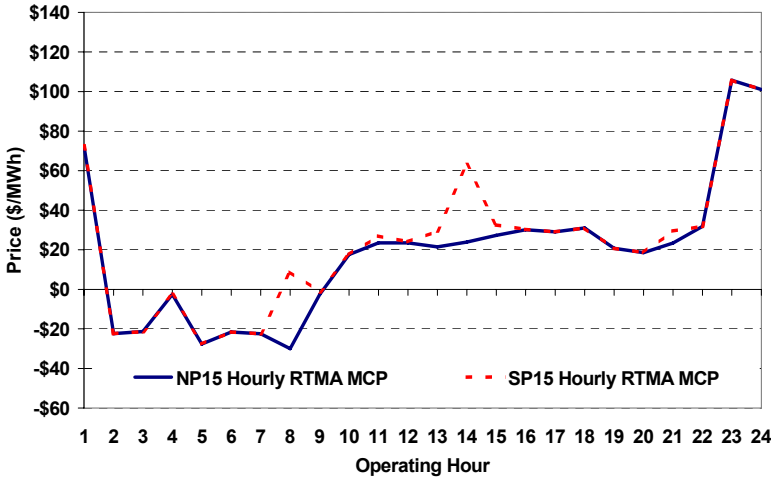
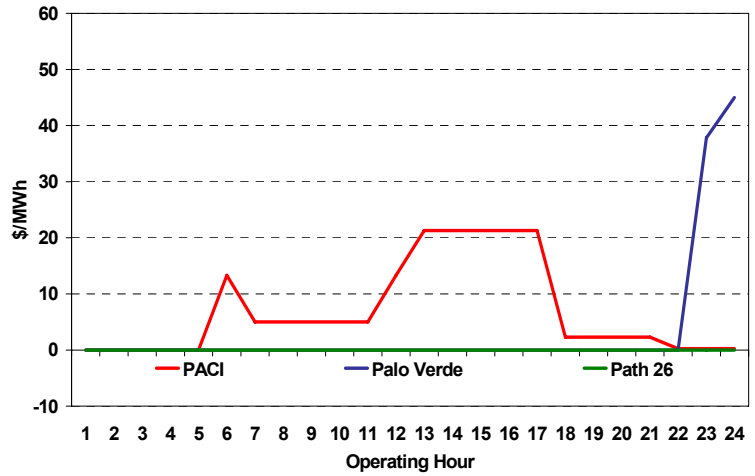


The content of this page is subject to change without notice. Decisions based on information contained herein are the visitor's responsibility.

### Real-Time Hourly Average MCP



### Selected Day Ahead Branch Group Congestion Prices



	NP15				SP15			
	Min	Max	Avg	Δ Avg.	Min	Max	Avg	Δ Avg.
RTMA MCP								
Peak	\$ (29.95)	\$ 55.00	\$ 17.46	\$ (6.47)	\$ (29.95)	\$ 250.00	\$ 24.20	\$ (11.21)
Off-Peak	\$ (29.95)	\$ 399.00	\$ 11.55	\$ (16.80)	\$ (29.95)	\$ 399.00	\$ 11.55	\$ (16.80)

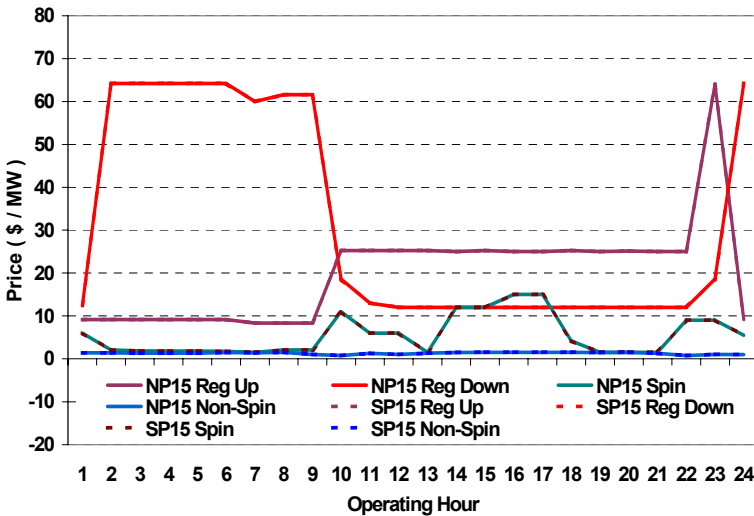
### Day-Ahead Inter-Zonal Congestion Market: 10-Jun, 2006

Branch Group	Congestion Cost		Total	Total Cost Percent
	Import	Export		
PACI	\$ 304,006	\$ -	\$ 304,006	84%
Palo Verde	\$ 57,231	\$ -	\$ 57,231	16%

Branch Group	Percentage of Hours Being Congested (%)		Avg. Cong. Price (\$/MWh)	
	Import	Export	Import	Export
PACI	79	0	9	
Palo Verde	8	0	41	

### Day Ahead A/S Market Clearing Prices



### Intrazonal Congestion: Out-of-Sequence Redispatch Costs

	Inc MWh	Inc Redispatch Costs	Dec MWh	Dec Redispatch Costs
Peak	0	0	-35	5
Off-Peak	74	3,102	-85	0
Total	74	\$ 3,102	-120	\$ 5

### Loads:

Peak Load	29,000 MW	Average Load	25976 MW
Time of peak	16:02	Δ Peak from Prev. Day	-4,523 MW

Day Ahead (DA) Market Summary:	Peak				Off-Peak			
	Min	Max	Avg.	Δ Avg.	Min	Max	Avg.	Δ Avg.
Ancillary Services (A/S) Capacity								
Regulation Up Price (\$/MW)	8.33	25.25	21.98	2.26	9.17	64.01	16.03	5.87
Regulation Down Price (\$/MW)	12.01	61.58	21.68	2.00	12.47	64.23	52.05	5.69
Spinning Reserve Price (\$/MW)	1.54	15.00	6.38	-3.16	1.75	9.00	3.73	0.14
Non-Spinning Reserve Price (\$/MW)	0.80	1.53	1.32	-2.46	1.00	1.50	1.29	-0.03
Regulation Up Bid Sufficiency Ratio*	110%	247%	158%	27%	105%	223%	167%	23%
Regulation Down Bid Sufficiency Ratio*	123%	318%	264%	65%	77%	246%	109%	50%
Spinning Reserve Bid Sufficiency Ratio*	118%	220%	148%	36%	125%	209%	190%	4%
Non-Spinning Reserve Bid Sufficiency Ratio*	108%	240%	152%	18%	144%	238%	216%	4%
<b>Total Cost of DA A/S (\$)</b>			<b>558,014</b>	<b>-20,737</b>				

\* The Bid Sufficiency Ratio for a given market in a given hour is defined as the sum of capacity offers in MWs divided by the capacity requirement in MWs.